

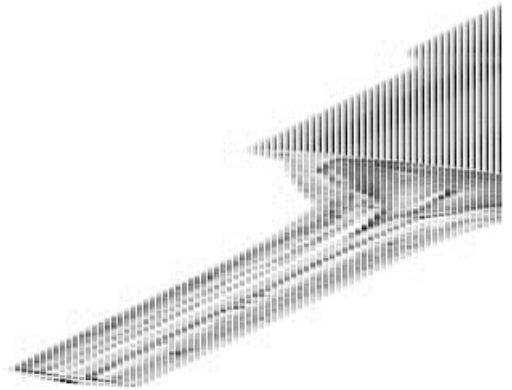
INSULATED PIN CRIMPS

SKS

2545.0

SKS 1, 1mm² Insulated pin crimp, Red

- Pin shaped acc. to DIN 46231 and similar
- Cu-ETP acc. to DIN EN13599, soldered, galv. Sn
- Wide easy entry collar PA insulation
- Continuous-use temperature range -55°C...105°C



PRODUCT DESCRIPTION

Conta-Clip offer a range of standard automotive type insulated pin crimp terminals to suit many applications.

These terminals are usually identified by the coloured collars for the various cable sizes.

The standard range covers from 0.5mm² to 6mm² cable sizes.

All types within the range have a widened cable entry, making for an easy installation.

TECHNICAL DATA

GENERAL DATA

Colour	Red
Rated wire cross section to (AWG)	18
Rated wire cross section from (AWG)	20
Conductor shape	Pen shape acc.DIN 46231
Cross section max	1 mm ²
Cross section min	0,5 mm ²

DIMENSIONS

Diameter of feed-in funnel	4,1 mm
Length	23,5 mm
DIN size	1

MATERIALS

Operating temperature from	-55 °C
Operating temperature to	105 °C
Soldered	Yes
Conductor material	Copper
Contact surface	Tinned

APPROVALS

DIN approvals	EN 13599
---------------	----------

ADDITIONAL DATA

Pack size	100
Country of origin	TW
Tariff code	85369010
Weight	0,71 g
Insulation material	Expanded PA

