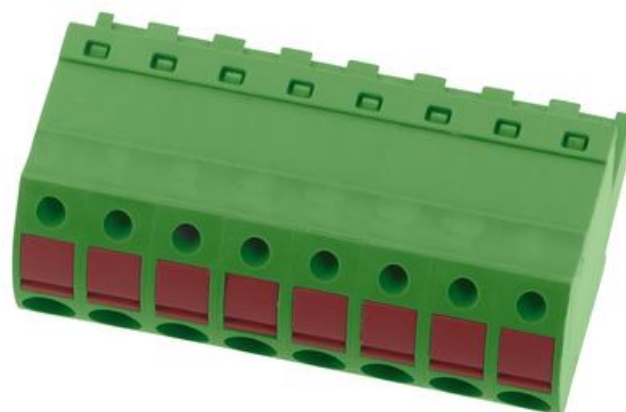


## PFB 4951

30382.1  
PFB 4951/2/5,00-KD GN



### PRODUCT DESCRIPTION

### TECHNICAL DATA

#### GENERAL DATA

Type	Plug-in connector
Pitch	5 mm
Colour	Green
Number of poles	2
Approvals	UL, cUL, VDE

#### RATINGS

Rated current	12 A
Rated voltage	250 V
Rated cross section	2,5 mm <sup>2</sup>
Rated impulse voltage	4 kV
Overvoltage category	III
Contamination degree	3

#### DIMENSIONS

Length	15 mm
Width	10 mm
Height	25,6 mm
Width left	2,5 mm
Width right	2,5 mm

## CONNECTION DATA

Connector type/principle	Push-in
Contact version	Female connector
Connector version	Pluggable
Number of plugin rows	1
Cross section single wire from	0,2 mm <sup>2</sup>
Cross section single wire to	2,5 mm <sup>2</sup>
Cross section stranded wire from	0,2 mm <sup>2</sup>
Cross section stranded with ferrule to	2,5 mm <sup>2</sup>
Cross section stranded wire to	2,5 mm <sup>2</sup>
Cross section stranded with ferrule from	0,25 mm <sup>2</sup>
Rated wire cross section to (AWG)	12
Rated wire cross section from (AWG)	26
Stripping length	12 mm

## MATERIALS

Housing material	Polyamide 6.6
Flammability class	UL94-V0
Operating temperature from	-30 °C
Operating temperature to	105 °C
Contact spring	Copper alloy
Terminal spring	Stainless steel

## APPROVALS

UL test standard	UL 1059
Rated voltage UL	300 V
Rated current UL	10 A
cUL test standard	CSA 22.2 No.158
Rated voltage cUL	300 V
Rated current cUL	10 A
VDE test standard	DIN EN 61984
Rated voltage VDE	250 V
Rated current VDE	12 A

## ADDITIONAL DATA

Glow wire ignition temperature (GWIT)	GWIT 775
---------------------------------------	----------

<b>Insulation resistance</b>	1*10 <sup>13</sup> Ω x cm
<b>Pack size</b>	50
<b>Angle of wire connection/contact</b>	0°/180° (horizontal)
<b>Country of origin</b>	QU
<b>Tariff code</b>	85366990
<b>Glow wire flammability index (GWFI)</b>	GWFI 850
<b>Weight</b>	3,37 g
<b>GWFI after-glow time</b>	30 s
<b>Plug-in cycles acc. to standard</b>	100
<b>GWIT exposure time</b>	5 s
<b>Current creepage resistance</b>	CTI 600
<b>Connection cycles acc. to standard</b>	5

