

MINIMOTOR MCF WORM GEAR MOTOR

MCF2T2-10 B3
230/400V 3 ph 280rpm 1 Nm B3 mount

- For clean environments
- IP67 as standard
- Up to 6.4Nm rated torque
- Minimal dirt trap points
- Epoxy coated with no external fan



PRODUCT DESCRIPTION

WORM GEARED MOTOR

White epoxy coating for increased protection against chemicals and harsh working environments.
IP67 rated with no external fan.

MOTOR: Asynchronous three-phase motor with 2 poles, totally Class H winding in accordance with CEI EN 60034-1.

GEAR UNIT: With die-cast aluminium casing. Wheel rim in special bronze 120/160 HB hardness. Worm gear in hardened steel with thread rotating on ball and roller bearings. Output shaft in stainless steel on request

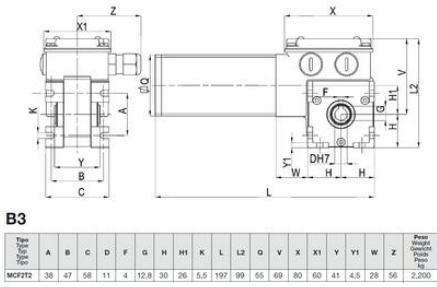
Lubrication with special long-lasting oil. Sealing rings made in special white rubber for high temperatures.
Rated torque from 0,8 to 5 Nm. Version B3 or B5. B5/S left version - B5/D right version.

The standard MCE version is also available with IP67 called MCEF

[Please click here for 2D and 3D drawings](#)

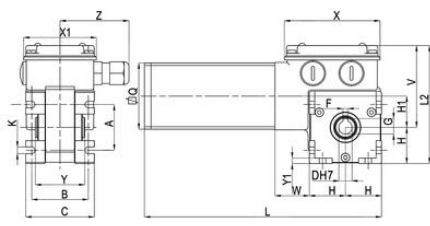
TECHNICAL DATA

Input voltage ac	230Δ/400Y
IP class	IP67
Nominal speed	280 rpm
Nominal torque	1 Nm
Output power	31 W
Rated current	0.30Δ/0.17Y A
Ratio	10:1



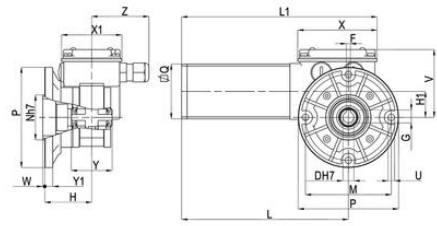
B3

Type	A	B	C	D	F	G	H	H1	K	L	L2	Q	V	X	X1	Y	Y1	W	Z	Permissible Weight Per Motor
MC372	38	47	58	11	4	12,8	30	26	5,5	197	99	55	69	80	60	41	4,5	28	56	2,200



B3

Type	A	B	C	D	F	G	H	H1	K	L	L2	Q	V	X	X1	Y	Y1	W	Z	Permissible Weight Per Motor
MC372	38	47	58	11	4	12,8	30	26	5,5	197	99	55	69	80	60	41	4,5	28	56	2,200



B5/S

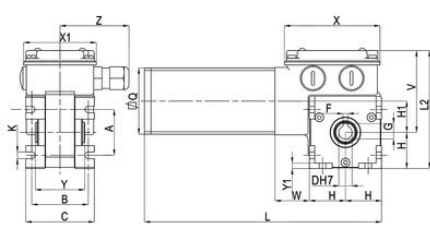
Type	D	F	G	H	L	L1	M	N	P	Q	U	V	X	X1	Y	Y1	W	Z	Z1	Permissible Weight Per Motor	
MC372	11	4	12,8	48	26	167	196	86	45	100	55	4,5	69	80	60	41	8	2	56	40	2,800

LCD model selection

Electric motors | Geared motor | Worm gearmotors | Brushless servomotors | Clean products

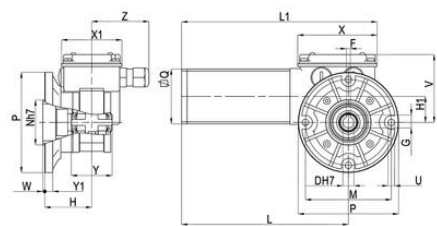
Please see product description above for 2D and 3D drawings

Others



B3

Type	A	B	C	D	F	G	H	H1	K	L	L2	Q	V	X	X1	Y	Y1	W	Z	Permissible Weight Per Motor
MC372	38	47	58	11	4	12,8	30	26	5,5	197	99	55	69	80	60	41	4,5	28	56	2,200



B5/S

Type	D	F	G	H	L	L1	M	N	P	Q	U	V	X	X1	Y	Y1	W	Z	Z1	Permissible Weight Per Motor	
MC372	11	4	12,8	48	26	167	196	86	45	100	55	4,5	69	80	60	41	8	2	56	40	2,800

LCD model selection

Electric motors | Geared motor | Worm gearmotors | Brushless servomotors | Clean products

Please see product description above for 2D and 3D drawings

Others