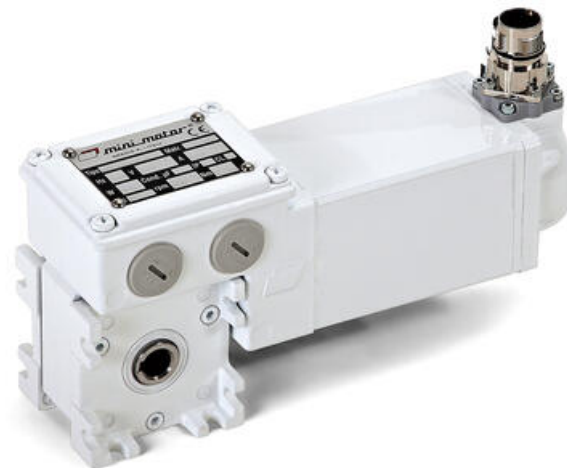


## MINIMOTOR MCFBS WORM GEAR MOTOR

MCFBS 55/50-10 B3  
230V 300rpm 2.8 Nm B3 mount

- For clean environments
- IP67 as standard
- Up to 13Nm rated torque
- 4 pole brushless motor
- Fitted with sealed connector



### PRODUCT DESCRIPTION

White epoxy coating for increased protection against chemicals and harsh working environments.  
IP67 rated with no external fan.

**MOTOR:** 4 poles sinusoidal brushless motor, totally enclosed. Rotor with NdFeB magnets. Safety circuit breaker. Class H winding in accordance with CEI EN 60034-1. IP67 standard protection in accordance with CEI EN 60529. Feedback with 2 pole resolver. Reduced clearance bearings with special grease for high temperatures.

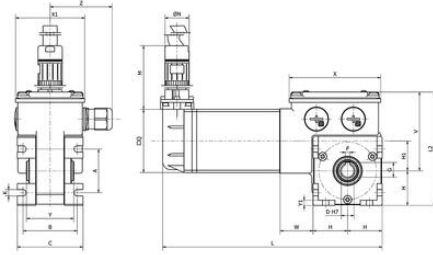
**GEARUNIT:** with die-cast aluminium casing. Centre distance 26 mm. CARO bronze ring, 120÷160 HB hardness. Worm gear in hardened steel with grinding thread rotating on ball and roller bearings, output shaft in stainless steel on request.

Lubrication with special long-lasting oil. Sealing rings made in special rubber for high temperatures. 10 gear ratios (i) available, from 5 to 80. Rated torque 9 Nm. Version B3 or B5. B5/S left version - B5/D right version.

[Please click here for 2D and 3D drawings](#)

### TECHNICAL DATA

<b>Nominal speed</b>	300 rpm
<b>Nominal torque</b>	2,8 Nm
<b>Ratio</b>	10:1



B3

Motor	A	B	C	D	F	G	H	H1	K	L	L2	Q	V	X	X1	Y	Y1	W	Z	Max. length Growth Factor Kg
MCF85 55-90	38	47	58	11	4	12,8	30	26	5,5	190,5	99	55	69	80	60	41	4,5	28,5	56	1,96

**C30 motor selection**

Electric motors

19.06.2017

Geared motor

19.06.2017

Worm gear motors

19.06.2017

Brushless servomotors

19.06.2017

Clean products

19.06.2017

Charts

Please see product description above for 2D and 3D drawings

**C30 motor selection**

Electric motors

19.06.2017

Geared motor

19.06.2017

Worm gear motors

19.06.2017

Brushless servomotors

19.06.2017

Clean products

19.06.2017

Charts

Please see product description above for 2D and 3D drawings