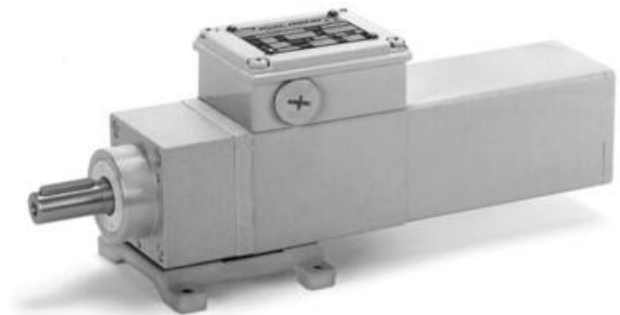


## MINIMOTOR - ACEF COAXIAL GEAR MOTORS WITH FURTHER PLANETARY GEAR

ACEF2T2B3-75

- For clean environments
- IP67 as standard
- Up to 23.5Nm rated torque
- Minimal dirt trap points
- Epoxy coated with no external fan



### PRODUCT DESCRIPTION

COAXIAL AND PLANETARY GEARED MOTOR

White epoxy coating for increased protection against chemicals and harsh working environments.  
IP67 rated with no external fan.

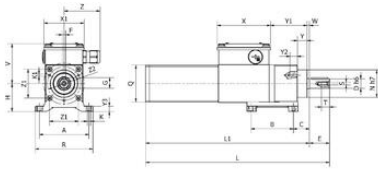
MOTOR: Asynchronous three-phase motor with 2 poles, totally Class H winding in accordance with CEI EN 60034-1.

GEAR UNIT: With casing in die-cast aluminium. Case-hardened and hardened bearings, output shaft in stainless steel on request. Lubrication with long-lasting oil (not toxic).

15 gear ratios (i) available, from 37 to 2209.5. Rated torque from 3.9 to 23.5 Nm. Version B3 or B5.

### TECHNICAL DATA

<b>Input voltage ac</b>	230Δ/400Y
<b>IP class</b>	IP67
<b>Nominal speed</b>	75 rpm
<b>Nominal torque</b>	3,9 Nm
<b>Output power</b>	31 W
<b>Rated current</b>	0.30Δ/0.17Y A
<b>Ratio</b>	37:1



B3

Type	A	B	C	D	E	F	G	H	K	K1	L	L1	N	Q	R
ACEF2T2	74	63	24	14	30	5	16	43	5,5	M4	274	264	41	55	86

Type	S	T	V	X	X1	Y	Y1	Y2	Y3	W	Z	Z1	Z2	Peak output Power kg
ACEF2T2	M5	12	60	80	60	14,5	55	11	8	3,5	56	43	50	3,200

CEC motor selection

Electric motors  
Geared motor  
Worm gearmotors  
Brushless servomotors  
Clean products

Please see product description above for 2D and 3D drawings

CSD motor selection

Electric motors  
Geared motor  
Worm gearmotors  
Brushless servomotors  
Clean products

Please see product description above for 2D and 3D drawings