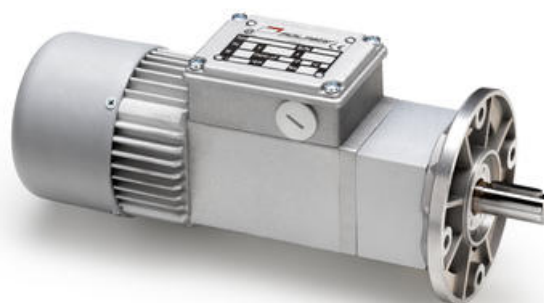


# MINIMOTOR - ACE - COAXIAL GEAR MOTOR WITH FURTHER PLANETARY REDUCTION

ACE66TB3-0.6  
230/400V 3 ph 0.6rpm 23.5Nm B3 mount

- Single or three phase versions
- 10 to 74W delivered power
- Up to 23.5Nm rated torque
- B3 foot or B5 flange mounting
- IP65 as standard



## PRODUCT DESCRIPTION

High quality, designed from the ground up to IP65 rated compact gear motor.

Physically smaller than the majority of similar powered gear motors due to the use of high quality components in precision manufacturing.

Ideally suited to many applications, including label and packaging machines, conveyors, pharmaceutical and medical machinery

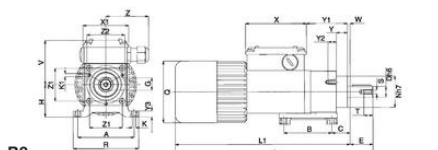
**MOTOR:** asynchronous single or three phase with 2 or 4 poles, totally enclosed with external ventilation. Thermal safety cutout on single phase model. Class F. IP65 protection according to CEI EN 60529.

**GEAR UNIT:** first stage with die-cast aluminium case, second stage in steel. Case-hardened and hardened gear pairs with shafts rotating on roller bearings. Lubrication with long life oil. Sealing rings made in special rubber for high temperatures. 15 gear ratios (i) available, from 37 to 2209.5. Rated torque 23.5 Nm. Version B3 or B5.

[Please click here for 2D and 3D drawings](#)

## TECHNICAL DATA

<b>Input voltage ac</b>	230Δ / 400Y
<b>Nominal speed</b>	0,6 rpm
<b>Output power</b>	10 W
<b>Rated current</b>	0.19Δ / 0.11YA A
<b>Rated torque</b>	23.5Nm
<b>Ratio</b>	2209.5:1



**B3**

Type	A	B	C	D	E	F	G	H	K	K1	L	L1	N	Q	R	S	T	V	X	X1	Y	Y1	Y2	V3	W	Z	Z1	Z2	Ratio	Rated Output Power (W)
ACE...	74	63	24	14	30	5	16	43	5.5	M4	20	20	41	81	86	M5	12	60	60	60	14.5	55	11	8	3.5	56	43	50	2,643	
ACE..P	74	63	24	14	30	5	16	43	5.5	M4	20	20	41	81	86	M5	12	60	60	60	14.5	55	11	8	3.5	56	42	50	3,810	
ACE..P2	74	63	24	14	30	5	16	43	5.5	M4	20	20	41	81	86	M5	12	60	60	60	14.5	55	11	8	3.5	56	43	50	3,320	



Please see product description above for 2D and 3D drawings

