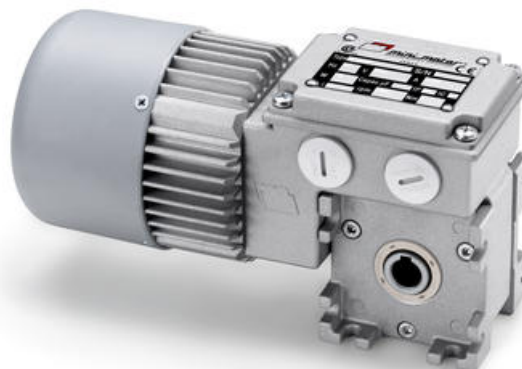


MINIMOTOR - MC WORM GEAR MOTOR

MC160P2B3-373
230V 1 ph 373rpm 1.5Nm B3 mount

- Single or three phase
- 14 to 180W delivered power
- Up to 9Nm rated torque
- B3 foot or B5 flange mounting
- IP65 as standard



PRODUCT DESCRIPTION

High quality, designed from the ground up to IP65 rated compact gear motor.

Physically smaller than the majority of similar powered gear motors due to the use of high quality components in precision manufacturing.

Ideally suited to many applications, including label and packaging machines, conveyors, pharmaceutical and medical machinery

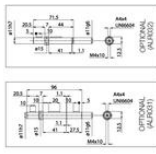
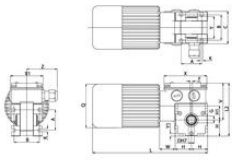
MOTOR: Asynchronous single or three phase with 2 or 4 poles. Totally enclosed with external ventilation. Thermal safety cutout on single phase model. Class F winding. IP65 protection according to CEI EN 60529.

GEAR UNIT: Die-cast aluminium casing. Centre distance 26 mm. CARO bronze ring, 120÷160 HB hardness. Hardened steel screw with ground thread rotating on ball and roller bearings. Lubrication with special long life oil. Sealing rings made in special rubber for high temperatures. 9 gear ratios (i) available, from 7.5 to 80. Rated torque 9 Nm. Version B3 or B5. B5/S left version - B5/D right version.

[Please click here for 2D and 3D drawings](#)

TECHNICAL DATA

Capacitor	4 μ F
Input voltage ac	230V
IP class	IP65
Nominal speed	373 rpm
Nominal torque	1,5 Nm
Output power	60 W
Rated current	0.54A A
Ratio	7.5:1



3D model selection

- Electric motor
- Second motor
- Worm gearmotor
- Brushless servomotor
- Clean products

15.06.2017 15.06.2017 15.06.2017 15.06.2017 15.06.2017

15.06.2017

Others

Please see product description above for 2D and 3D drawings

B3

Motor Type	A	B	C	D	F	G	H	H1	K	L	L2	O	V	X	X1	Y	Y1	W	Z	Mass Weight (kg)
MC-P	38	47	58	11	4	12,8	30	26	5,5	193	99	81	69	80	60	41	6	28	56	2,130
MC-P2	38	47	58	11	4	12,8	30	26	5,5	213	99	81	69	80	60	41	6	28	56	2,440
MC-P3	38	47	58	11	4	12,8	30	26	5,5	251	99	95	69	80	60	41	6	28	56	3,320