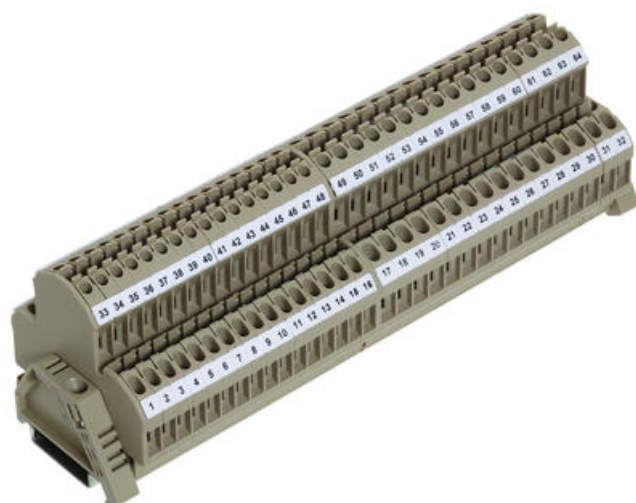


DOUBLE DECK TERMINALS - RKD 2.5-4MM²

RKD, RKDG

1206.1
RKD 2.5 Green, 2.5mm² Double deck, multi-foot

- Screw cross connectors
- Temperature resistance -40 °C...+105 °C
- Polyamide 6.6 UL94-V2
- Same level screw option
- Versions with electronic components fitted



PRODUCT DESCRIPTION

TECHNICAL DATA

GENERAL DATA

Rated wire cross section	2,5 mm ²
Colour	Green
Rated voltage IEC	500 V
Rated current IEC	24 A
Mounting	TS 35
Rated impulse voltage	6 kV
Overvoltage category	III
Contamination degree	3
Approvals	UL, KEMA KUR

DIMENSIONS

Length	60,2 mm
Width	5 mm
Height TS 35/7.5	61 mm
Height TS 32	65,5 mm

CONNECTION DATA

Connections	2 x 2
Number of levels	2

Plug gauge acc. EN 60 947-1	A3
Cross connect channels	2
Number of test pick off options	1
Cross section single wire from	0,2 mm ²
Cross section single wire to	4 mm ²
Cross section stranded wire from	0,2 mm ²
Cross section stranded wire to	4 mm ²
Cross section stranded with ferrule from	0,2 mm ²
Cross section stranded with ferrule to	2,5 mm ²
Rated wire cross section from (AWG)	22
Rated wire cross section to (AWG)	14
Stripping length	7 mm
Screw size	M 2,5
Screw type	Slotted
Torque min	0,4 Nm
Torque max	0,8 Nm

MATERIALS

Insulation material	Polyamide 6.6
Flammability class	UL94-V2
Operating temperature from	-40 °C
Operating temperature to	105 °C

APPROVALS

UL test standard	UL 1059
KEMA KEUR test standard	EN 60947-7-1:2009

ADDITIONAL DATA

Tariff code	85369010
Country of origin	CZ
Weight	11 g
Pack size	100
Type of terminal	Screw Terminals, DIN Rail terminals