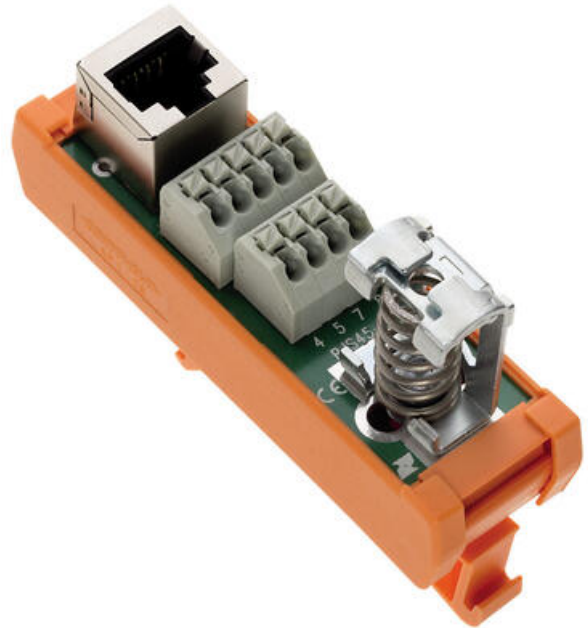


ETHERNET AND USB INTERFACE MODULES

RJ, RJU, RJS, USB, IX-SH

15904.2
RJS-45-SH, RJ45 Shielded interface module, CAT5
(100 Mbps), Push in terminals

- Compact
- RJ 45 Shielded versions
- USB A/B
- Industrial Ethernet
- 2 -Wire Single Pair Ethernet



PRODUCT DESCRIPTION

This range of interface modules use the standardized RJ45 Ethernet and USB connectors from computer components, Ethernet ready devices or modems and have screw PCB terminals for easy connection.

The RJS45-SH is even more compact and uses push in connectors and has the added spring shield clip for locally grounding the cable.

New additions to the range include the Industrial SPE (Single Pair Ethernet) interface with spring shield clip and the IX Industrial Ethernet.

TECHNICAL DATA

GENERAL DATA

Connector type	RJ45
Category	CAT 5
Connection type	Push-in
Number of connections	1
Number of poles	8
Shielded	Yes

DIMENSIONS

Height TS 35/7.5	63 mm
Length	87 mm
Width	26 mm

CONNECTION DATA

Cross section single wire from	0,14 mm ²
Cross section stranded with ferrule from	0,14 mm ²
Cross section stranded with ferrule to	0,5 mm ²
Stripping length	9 mm
Contact material	Cu-Sn-P 1.27 μm Au 1.27 μm Ni
Cross section single wire to	1 mm ²

RATINGS

DIN-VDE Spec	DIN VDE 0110 / EN 50178
Current carrying capacity per channel max	1 A
Operating temperature from	-20 °C
Operating voltage ac/dc max	125 V
Operating temperature to	50 °C
Contamination degree	2
Durability (plugging cycles)	750
Overvoltage category	III
Test voltage eff	0,75 kV

ADDITIONAL DATA

Pack size	1
Country of origin	NL
Tariff code	85369010
Weight	61,05 g