

## JUNG HYGHSPIN HOPPER SERIES PUMP

Hygienic twin screw pump

JPS HYGHSPIN 70H

- Flow 100l/h to 30m<sup>3</sup>/h
- Pressure up to 25 bar
- Viscosity up to 50,000,000 cSt
- Temperature -10°C to +130°C (160°C)
- Max. particle size 45mm



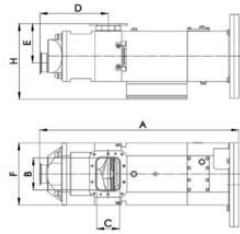
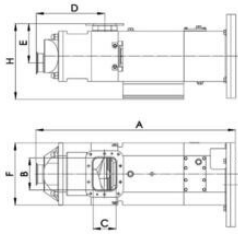
### PRODUCT DESCRIPTION

The HYGHSPIN Hopper is an addition to the worldwide tried and tested HYGHSPIN series of Twin Screw Pumps made of stainless steel. The innovative twin screw pump with a funnel opening is capable of transporting products with viscosities of up to 1000 Pas. Its conveyor screws are extended so that they can induct non-flow capable products below the inlet funnel in a similar principle to an extruder and then feed them into the pump chamber. This ensures a particularly gentle handling - an external extruder can be completely dispensed with.

The HYGHSPIN Hopper therefore provides a very attractive 3-in-1 solution: Feeding, conveying and cleaning take place in only one component. It is available in block design or with free shaft end.

### TECHNICAL DATA

<b>Connection type</b>	Different sizes and connector standards by arrangement
<b>Differential pressure</b>	20 bar
<b>Flow max</b>	10 m <sup>3</sup> /h
<b>Material of elastomers</b>	EPDM, FPM, HNBR (Nitrile rubber), FFPM
<b>Material of wetted parts</b>	Stainless steel 316/316L (1.4401/1.4404), Stainless steel 1.4462, 1.4404, Stainless Steel 1.4539
<b>Maximum diameter of solid material</b>	20 mm
<b>Pump orientation</b>	Horizontal, vertical or lateral
<b>Temperature operational max</b>	180 °C
<b>Temperature operational min</b>	-10 °C
<b>Viscosity</b>	0.5 - 1,000,000 mPas



Pumpstorlek	A	B	C	D	E	F	G	H	Inlogg (stall)	vikt
70 Hopper	613mm	98mm	62mm	211mm	175mm	199mm	85mm	272mm	DN65 DN100 (2" 5/8")	70kg
90 Hopper	814mm	134mm	93mm	278mm	164mm	250mm	45mm	317mm	DN80 DN150 (3" 1/8")	135kg
125 Hopper	1065mm	182mm	122mm	384mm	203mm	348mm	62,5mm	418mm	DN100 DN200 (4" 8")	302kg

Pumpstorlek	A	B	C	D	E	F	G	H	Inlogg (stall)	vikt
70 Hopper	613mm	98mm	62mm	211mm	175mm	199mm	85mm	272mm	DN65 DN100 (2" 5/8")	70kg
90 Hopper	814mm	134mm	93mm	278mm	164mm	250mm	45mm	317mm	DN80 DN150 (3" 1/8")	135kg
125 Hopper	1065mm	182mm	122mm	384mm	203mm	348mm	62,5mm	418mm	DN100 DN200 (4" 8")	302kg