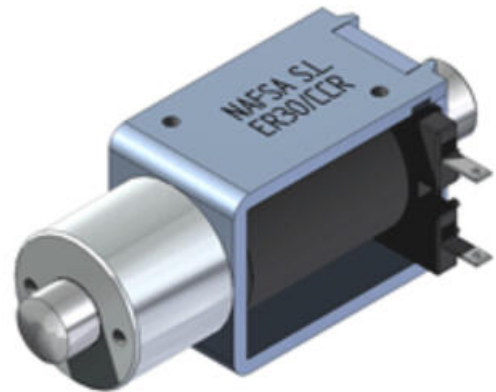


NAFSA - ER30 CCR SERIES
ER30/CCR

- Reinforced locking bolt
- Class B winding (130°C)
- Positive detection options
- Up to 1.6daN return force
- Customer specific version available

**PRODUCT DESCRIPTION**

This version of the ER series is a linear solenoid, reinforced to cope with extra external forces.

It has a front mounting and locks under voltage.

TECHNICAL DATA

| | |
|---|-----------|
| Absorbed power @ 20°C, 100% duty | 8 W |
| Duty cycle | 100 % |
| Insulation class | B (130°C) |
| IP class | IP00 |
| Return spring force | 0,16 N |
| Spring return | Yes |
| Stroke | 10 mm |
| Temperature rise | 70 °C |
| Total weight | 220 g |
| Voltage ac max | 230 V |
| Voltage ac min | 24 V |
| Voltage dc max | 205 V |
| Voltage dc min | 3 V |

Solenoid shown without voltage

