

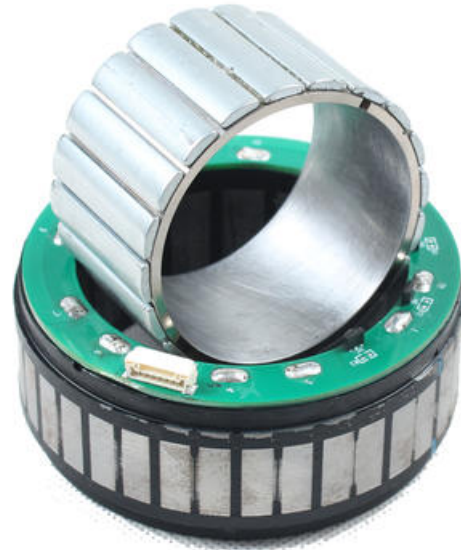


## FULLING FL50BL

50mm frameless BLDC motor

FL50BL08  
50mm 157W motor

- 48v DC
- 0.3 and 0.5 Nm torque
- 157 and 183 W power
- 20 and 26 mm height
- 5000 and 3500 rpm



### PRODUCT DESCRIPTION

Frameless motor for assembly into machine builds.

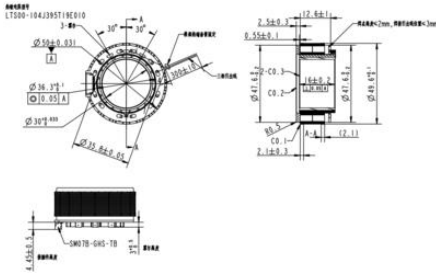
Keeps physical size down to a minimum and power density high.

3 phase winding

### TECHNICAL DATA

<b>Ambient temperature</b>	od -20°C do +50°C
<b>Front size</b>	50 mm
<b>Inductance</b>	0,45 mH
<b>Insulation class</b>	B
<b>Insulation resistance</b>	100 MΩ
<b>Length</b>	20 mm
<b>Max current</b>	11,6 A
<b>Max. torque</b>	0,96 Nm
<b>Nominal speed</b>	5000 rpm
<b>Nominal torque</b>	0,3 Nm
<b>Number of phases</b>	3
<b>Number of poles</b>	20

Power	157 W
Resistance	0,93 Ω
Returning voltage EMK	5,4 Vrms/krmp
Supplier	Fulling
Supply voltage	48 V DC
Torque constant	0,089 Nm/A
Weight	0,087 kg



Functions	Color	Type
Vcc	Pin1	
Hu	Pin4	
Hv	Pin3	Type: SM78-6AS-TB
Hr	Pin2	
GND	Pin5	
Phase U	Red	
Phase V	Yellow	UL1302 AWG22
Phase W	Black	