



FULLING FL63BL

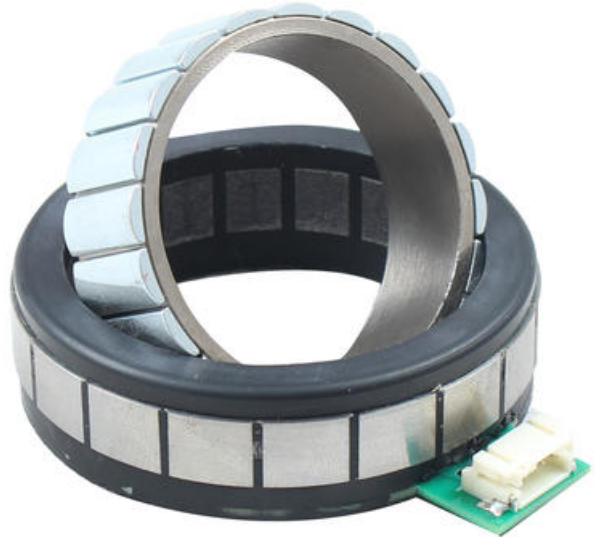
63mm frameless BLDC motor

FL63BL09

60mm 10.2W motor



- 24v DC
- 0.25 Nm torque
- 10.2 W power
- 17.2 mm height
- 390 rpm



PRODUCT DESCRIPTION

Frameless motor for assembly into machine builds.

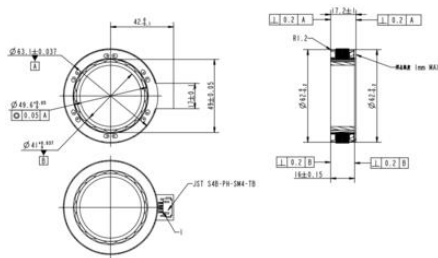
Keeps physical size down to a minimum and power density high.

3 phase winding

TECHNICAL DATA

Ambient temperature	od -20°C do +50°C
Front size	63 mm
Inductance	7,4 mH
Insulation class	B
Insulation resistance	100 MΩ
Length	17,2 mm
Max current	1,73 A
Max. torque	0,6 Nm
Nominal speed	390 rpm
Nominal torque	0,25 Nm
Number of phases	3
Number of poles	20

Power	10,2 W
Resistance	10,7 Ω
Returning voltage EMK	29 Vrms/krmp
Supplier	Fulling
Supply voltage	24 V DC
Torque constant	0,39 Nm/A
Weight	0,15 kg



Functions	Color	Type
Vcc	Pin1	
Hu	Pin4	
Hv	Pin3	Connector for Hall is optional Type: SM37B-GND-TB
He	Pin2	
GND	Pin5	
Phase U	Red	
Phase V	Yellow	Connector for phase Type: JST 54B-PHSM4-TB
Phase W	Black	