



## FULLING FL70BL

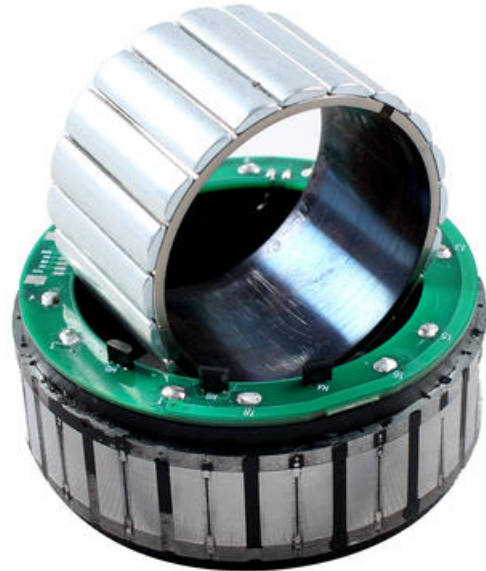
70mm frameless BLDC motor

FL70BL10

70mm 250W motor



- 48v DC
- 0.66 and 1 Nm torque
- 250 and 366 W power
- 27.5 and 32 mm height
- 3650 and 3500 rpm



### PRODUCT DESCRIPTION

Frameless motor for assembly into machine builds.

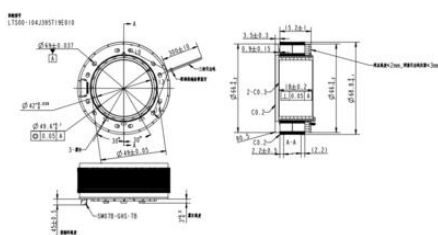
Keeps physical size down to a minimum and power density high.

3 phase winding

### TECHNICAL DATA

<b>Ambient temperature</b>	od -20°C do +50°C
<b>Front size</b>	70 mm
<b>Inductance</b>	0,41 mH
<b>Insulation class</b>	B
<b>Insulation resistance</b>	100 MΩ
<b>Length</b>	27,5 mm
<b>Max current</b>	18,5 A
<b>Max. torque</b>	1,98 Nm
<b>Nominal speed</b>	3650 rpm
<b>Nominal torque</b>	0,66 Nm
<b>Number of phases</b>	3

<b>Number of poles</b>	20
<b>Power</b>	250 W
<b>Resistance</b>	0,41 $\Omega$
<b>Returning voltage EMK</b>	7,4 Vrms/krmp
<b>Supplier</b>	Fulling
<b>Supply voltage</b>	48 V DC
<b>Torque constant</b>	0,12 Nm/A
<b>Weight</b>	0,22 kg



Functions	Color	Type
VCC	Pin1	Type: SM67B-GHS-TB
FU	Pin4	
HV	Pin3	
HW	Pin2	
GND	Pin5	
Phase U	Red	UL1332 AWG20
Phase V	Yellow	
Phase W	Black	