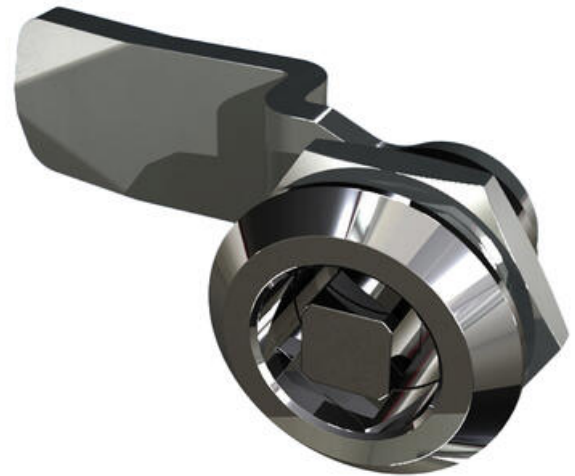


QUARTER-TURN 18MM LOCK

2412-024240-3845

- 18mm lock housing
- IP65
- 90°
- Vibration resistant
- Configurable



PRODUCT DESCRIPTION

A complete lock consisting of lock housing, nut, insert, washer, screw and rule.

This variant is structured with a product key, which is resolved together with the product manager.

Lock housing: Zinc, chrome plated

Nut: standard

Lock housing variant: square with size 7

Surface coating: chrome

Ip class: IP65 assembled

Rule: steel

H/L measurements: 00/45 mm

To achieve protection class IP65 (also classified "Waterproof according to NEMA 4"), an O-ring is placed on the insert and a flat gasket on the lock housing. The locks can be delivered unassembled, preassembled with enclosed rule or in complete assembled condition.

NOTE: On request, we can deliver the lock housing with integrated, foamed PUR gasket to simplify assembly in your application.

Example: Lock housing - chrome A=28, B=4, standard nut, insert Square 8 - chrome, IP65 / NEMA 4 mounting and rule - standard for H=22 mm L=45 mm gives the following article number: 2412-005250-2245. Tightness class IP65 / NEMA 4 is obtained through an O-ring on the insert and an integrated gasket on the lock housing.

Nuts:

SM = Standard nut.

JM = Earthing nut.

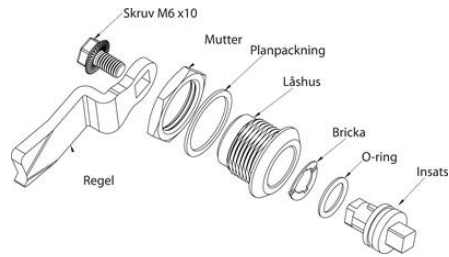
TECHNICAL DATA

Configurable	Yes
Dimension H	38 mm
Dimension L	45 mm
Material	Zinc, chrome
Material lock housing	Zinc, chrome
Material rule	Zinc plated steel

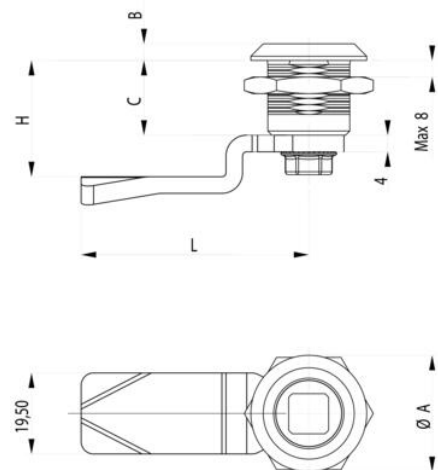
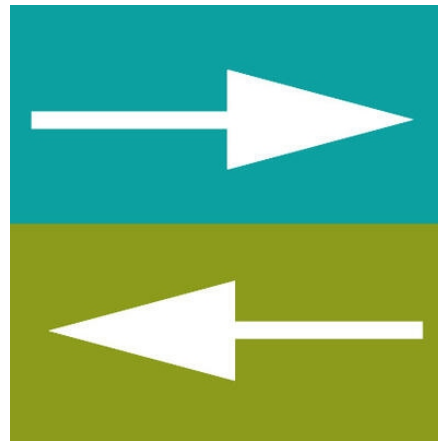
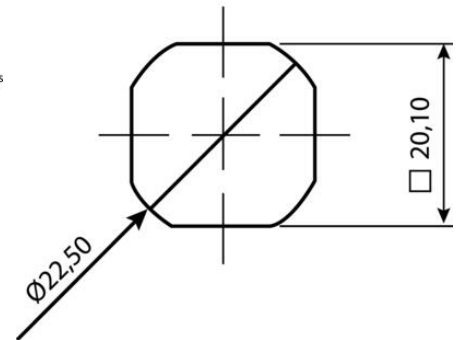
Opening angle

90 °

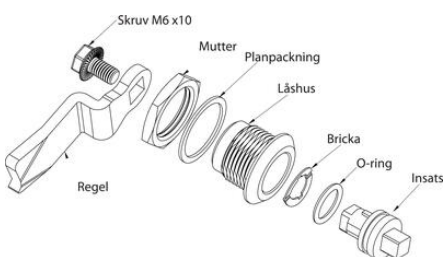
AAAA	Läsbox	B	Mutter	CC	Bräda	D	Vilåsh	F	Regel	-GGGG	Max. Längd	
VITRAL-TYNSKÖLLETTEN / B med (AAAA-REGEL-GGGG)												
2412	Zink, riktkompl A+22 B+4	0	St	20	Plank 0	2	Krom	0	1924, riktkompl	0	0000	Egen regel
2413	RAL, svart A+22 B+4	1	St	20	Plank 0	2	Krom	0	1924, riktkompl	0	0000	Egen regel
2414	Zink, svart A+22 B+4	1	St	20	Plank 0	2	Krom	0	1924, riktkompl	0	0000	Egen regel
2415	Zink, riktkompl A+22 B+4	0	St	20	Plank 0	2	Krom	0	1924, riktkompl	0	0000	Egen regel
2420	RAL, svart A+22 B+4	1	St	20	Plank 0	2	Krom	0	1924, riktkompl	0	0000	Egen regel
2426	Zink, svart A+22 B+4	1	St	20	Plank 0	2	Krom	0	1924, riktkompl	0	0000	Egen regel
2442	Zink, planlägg, A+22 B+4	1	St	20	Plank 0	2	Krom	0	1924, riktkompl	0	0000	Egen regel



COMBI



AAAA	Läsbox	B	Mutter	CC	Bräda	D	Vilåsh	F	Regel	-GGGG	Max. Längd	
VITRAL-TYNSKÖLLETTEN / B med (AAAA-REGEL-GGGG)												
2412	Zink, riktkompl A+22 B+4	0	St	20	Plank 0	2	Krom	0	1924, riktkompl	0	0000	Egen regel
2413	RAL, svart A+22 B+4	1	St	20	Plank 0	2	Krom	0	1924, riktkompl	0	0000	Egen regel
2414	Zink, svart A+22 B+4	1	St	20	Plank 0	2	Krom	0	1924, riktkompl	0	0000	Egen regel
2415	Zink, riktkompl A+22 B+4	0	St	20	Plank 0	2	Krom	0	1924, riktkompl	0	0000	Egen regel
2420	RAL, svart A+22 B+4	1	St	20	Plank 0	2	Krom	0	1924, riktkompl	0	0000	Egen regel
2426	Zink, svart A+22 B+4	1	St	20	Plank 0	2	Krom	0	1924, riktkompl	0	0000	Egen regel
2442	Zink, planlägg, A+22 B+4	1	St	20	Plank 0	2	Krom	0	1924, riktkompl	0	0000	Egen regel



COMBI

