

QUARTER-TURN 12MM LOCK

2402-022250-2245

Complete 90° lock, 12 mm, Double bit 3, Chrome, assembled

- 12mm lock housing
- IP65
- 90°
- Vibration resistant
- Compact



PRODUCT DESCRIPTION

Lock housing for vibration-resistant 90° lock.

This variant is structured with a product key, which is resolved together with the product manager.

Lock housing: Zinc, black powder coating.

Mounting: Fork spring

Lock housing variant: square with size 8

Surface coating: chrome

Rule: steel

H/L measurements: 00/45 mm

The clevis spring assembly saves time during assembly and holds the lock securely in place. Intended for plate thickness up to 2.7 mm.

O-ring on the insert and a flat gasket on the lock housing seal the lock.

MATERIAL:

Lock housing: Zinc, chrome-plated or black powder coating, structure.

Insert: Zinc, chrome-plated or black powder coating, structure.

Ruler and screw: Steel, for example.

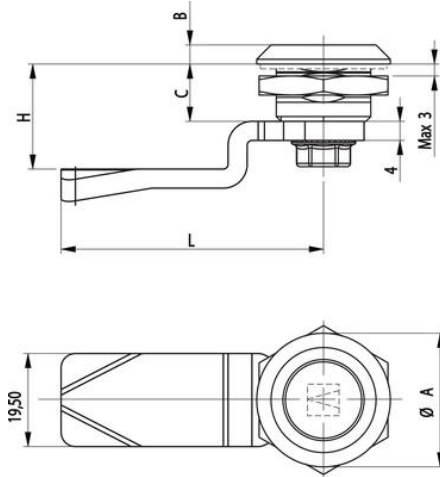
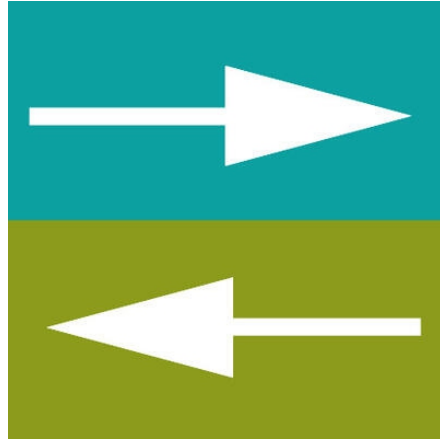
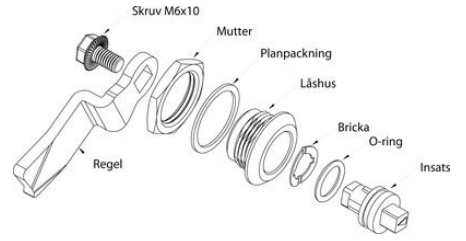
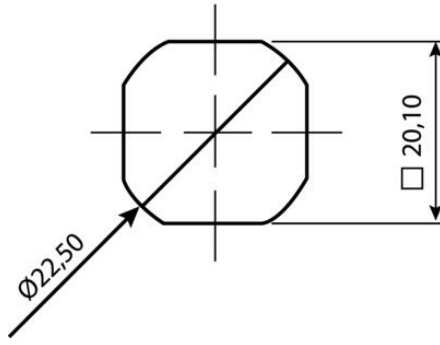
Washer: Stainless steel (304).

Fork spring: Spring steel SS 1774-04, fzb.

TECHNICAL DATA

Configurable	Yes
Dimension H	22 mm
Dimension L	45 mm
Material	Zinc, chrome
Material lock housing	Zinc, chrome
Material rule	Steel
Opening angle	90 °

SKAPA A&E AN FÖR KOMPLETT BP-LÅG - VIBRATIONSBESTÄMT												
12 mm (AAAA-BCDEF-GGGG)												
AAAA	Låshus	#	Profil	CS	Insats	Ø	VB&L	Planering	#	Regel	GGGG	VB&L
2402	Zink, bifrensmat	2	SM	1	1	1	1	1	1	1	-0200	Regel-regal
2402	Zink, svart	2	SM	1	1	1	1	1	1	1	-0245	2x45
2420	Zink med planläggning	2	SM	1	1	1	1	1	1	1	-0845	8x45
											-0845	8x45
											-1045	10x45
											-1245	12x45
											-1440	14x45
											-1645	16x45
											-1845	18x45
											-2045	20x45
											-2245	22x45
											-2445	24x45
											-2845	28x45
											-3045	30x45
											-3245	32x45
											-3445	34x45
											-3645	36x45
											-4045	40x45
											-4245	42x45
											-4445	44x45



SKAPA A&E AN FÖR KOMPLETT BP-LÅG - VIBRATIONSBESTÄMT												
12 mm (AAAA-BCDEF-GGGG)												
AAAA	Låshus	#	Profil	CS	Insats	Ø	VB&L	Planering	#	Regel	GGGG	VB&L
2402	Zink, bifrensmat	2	SM	1	1	1	1	1	1	1	-0200	Regel-regal
2402	Zink, svart	2	SM	1	1	1	1	1	1	1	-0245	2x45
2420	Zink med planläggning	2	SM	1	1	1	1	1	1	1	-0845	8x45
											-0845	8x45
											-1045	10x45
											-1245	12x45
											-1440	14x45
											-1645	16x45
											-1845	18x45
											-2045	20x45
											-2245	22x45
											-2445	24x45
											-2845	28x45
											-3045	30x45
											-3245	32x45
											-3445	34x45
											-3645	36x45
											-4045	40x45
											-4245	42x45
											-4445	44x45

