

FIEPOS EFUSE 3-PHASE

3x 380-480 V AC/24-28 V DC, 300 or 500 W

FPT300.246-042-101

IP54 Power supply 3x380-480 V AC/24 V DC, 300 W, NEC Class 2

- Decentralized Power Supply
- Up to 4 switchable outputs
- Output power 360/600 W
- 600/1000 Wpeak 5s
- IP54, IP65/IP67



PRODUCT DESCRIPTION

The FPS300 is an industrialgrade power supply for 3-phase networks and is incorporated in a rugged wall- mount housing with IP65/67 protection. It provides two to four stabilized outputs that are galvanically separated from the input.

The negative potential of the outputs is permanently connected to PE within the unit.

The most outstanding features of the FPS series are the compact size, the wide operational temperature range, the extremely low input inrush current and the very high efficiencies, which are achieved by various design technologies.

Large sized output capacitors can absorb and store regenerative energy from breaking motors.

TECHNICAL DATA

INPUT DATA

Input voltage ac	380-480
Input voltage ac min	323 V AC
Input voltage ac max	552 V AC
Inrush current at 400 V ac typical	2 A
Power factor at 400 V ac, full load. Typical	0,9
Number of phases	3

OUTPUT DATA

Output voltage	24 V DC
Output voltage min	24 V DC
Output voltage max	28 V DC
Output current	12,5 A

Output current max	25 A
Power	300 W

EFFICIENCY / LIFETIME / MTBF

Efficiency at 400 V ac, typical	93,5 %
Efficiency at 400 V ac, full load, typical	95,1 %
Lifetime at 400 V ac, full load and +40 ° C	312000 h
MTBF (IEC 61709) 400 V ac, max loan, +40 ° C	625000 h

DIMENSIONS

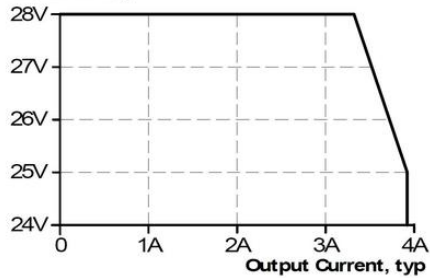
Width	182 mm
Height	272 mm
Depth	70 mm
Weight	1,55 kg

OTHER

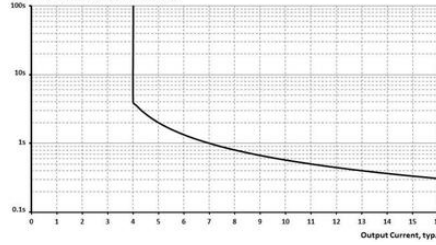
Approvals	CB, CE, cULus, NEC Class 2
Hold time at 400 V ac, typical full load	25 ms
IP class	IP54
Material protection	Aluminium
Supply frequency	50-60 Hz \pm 6 %
Ripple max	100 mV pp
Series	FIEPOS eFuse
Power consumption at 400 V ac	0,53 A
Temperature min without derating	-25 °C
Temperature max without derating	55 °C
Back-feeding loads	35V / 4,3 J
Max. Current per output	3,9 A
Total output power <+55°C	300 W
DC relay output	Yes
DC-OK/IO-link connector	M12-A
Total output power <1 s	600 W
Input connector	HAN Q5/0
Total output power <1 min	450 W
Output connectors	4x M12-A

IO-LINK	No
Total output power <+70°C	150 W
Power drop from +55 °C to + 70 °C	6 W/°C
Active Transient	Yes

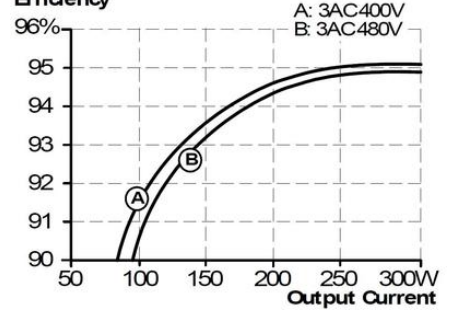
Output Voltage



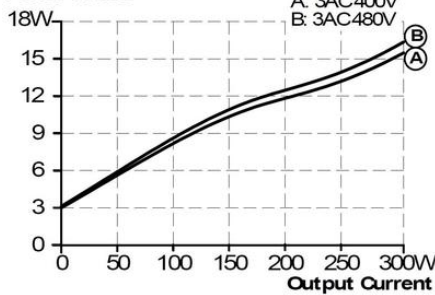
Time delay before switch off at overload, typ.



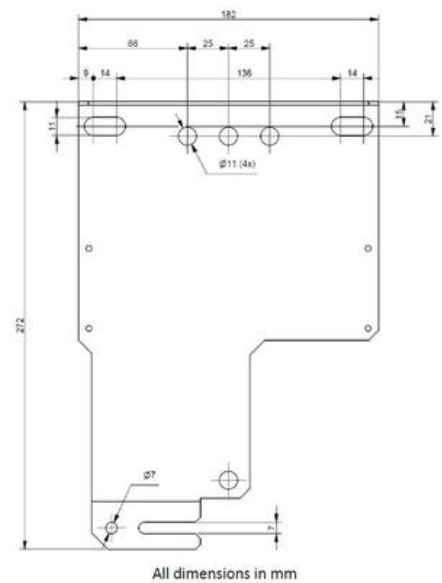
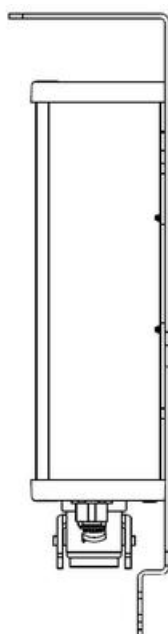
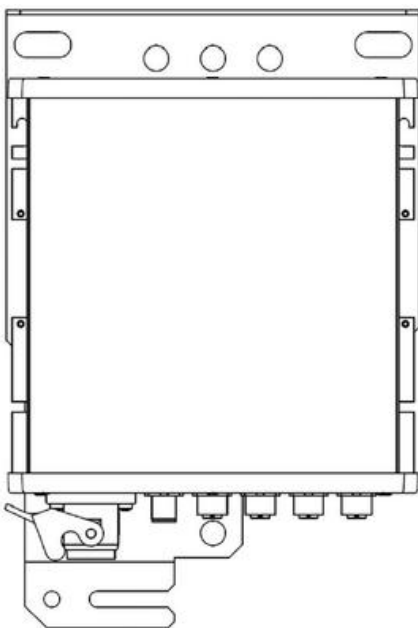
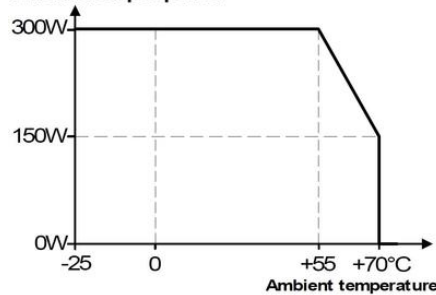
Efficiency

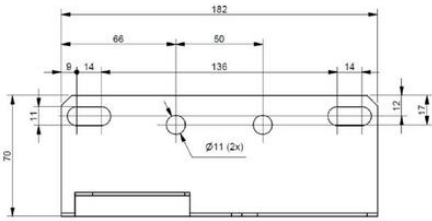


Power Losses



Allowed output power





All dimensions in mm

