

FIEPOS EFUSE 3-PHASE

3x 380-480 V AC/24-28 V DC, 300 or 500 W

FPT300.246-042-101

IP54 Power supply 3x380-480 V AC/24 V DC, 300 W,
 NEC Class 2

- Decentralized Power Supply
- Up to 4 switchable outputs
- Output power 360/600 W
- 600/1000 Wpeak 5s
- IP54, IP65/IP67



PRODUCT DESCRIPTION

The FPS300 is an industrialgrade power supply for 3-phase networks and is incorporated in a rugged wall- mount housing with IP65/67 protection. It provides two to four stabilized outputs that are galvanically separated from the input.

The negative potential of the outputs is permanently connected to PE within the unit.

The most outstanding features of the FPS series are the compact size, the wide operational temperature range, the extremely low input inrush current and the very high efficiencies, which are achieved by various design technologies.

Large sized output capacitors can absorb and store regenerative energy from breaking motors.

TECHNICAL DATA

INPUT DATA

Input voltage ac	380-480
Input voltage ac min	323 V AC
Input voltage ac max	552 V AC
Inrush current at 400 V ac typical	2 A
Number of phases	3
Power factor at 400 V ac, full load. Typical	0,9

OUTPUT DATA

Output voltage min	24 V DC
Output current max	25 A
Output voltage	24 V DC
Output voltage max	28 V DC

Power	300 W
Output current	12,5 A

EFFICIENCY / LIFETIME / MTBF

MTBF (IEC 61709) 400 V ac, max loan, +40 °C	625000 h
Lifetime at 400 V ac, full load and +40 ° C	312000 h
Efficiency at 400 V ac, full load, typical	95,1 %
Efficiency at 400 V ac, typical	93,5 %

DIMENSIONS

Weight	1,55 kg
Depth	70 mm
Width	182 mm
Height	272 mm

OTHER

IP class	IP54
Ripple max	100 mV pp
Hold time at 400 V ac, typical full load	25 ms
Power consumption at 400 V ac	0,53 A
Temperature min without derating	-25 °C
Series	FIEPOS eFuse
Supply frequency	50-60 Hz ±6 %
Approvals	CB, CE, cULus, NEC Class 2
Temperature max without derating	55 °C
Material protection	Aluminium
Output connectors	4x M12-A
Total output power <+55°C	300 W
Total output power <+70°C	150 W
Total output power <1 s	600 W
Total output power <1 min	450 W
Power drop from +55 °C to + 70 °C	6 W/°C
Active Transient	Yes
Back-feeding loads	35V / 4,3 J
DC relay output	Yes

DC-OK/IO-link connector

M12-A

Input connector

HAN Q5/0

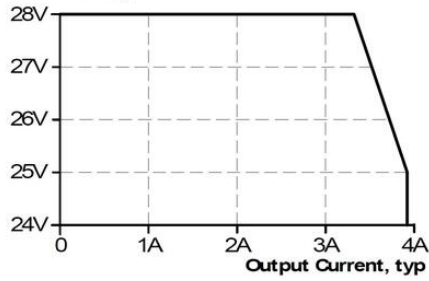
IO-LINK

No

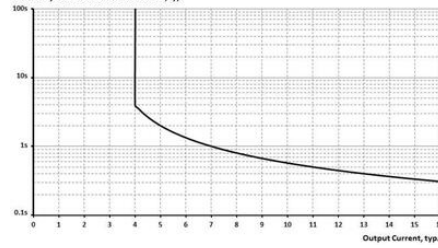
Max. Current per output

3,9 A

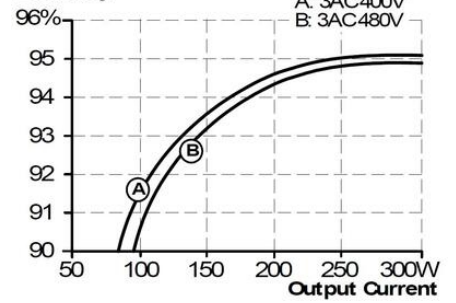
Output Voltage



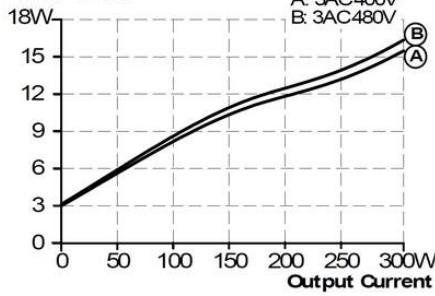
Time delay before switch off at overload, typ.



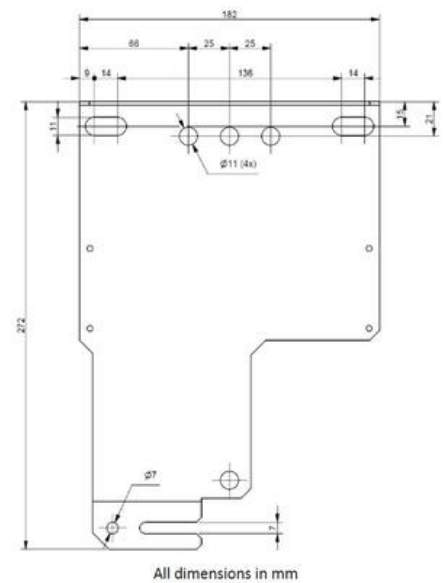
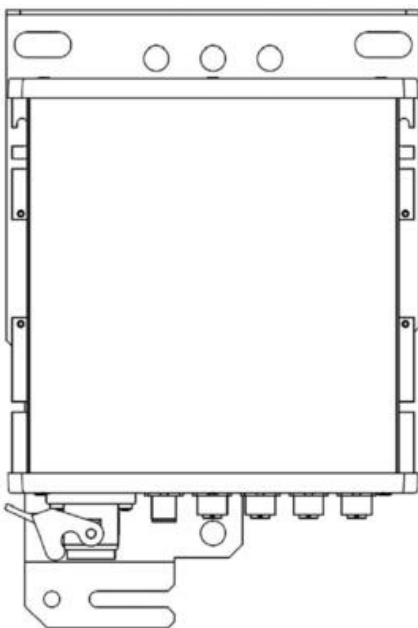
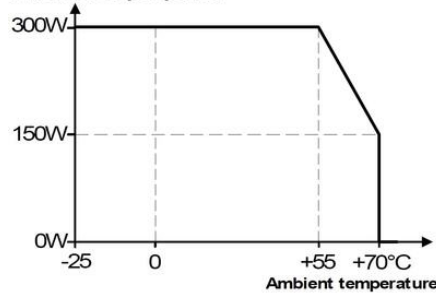
Efficiency



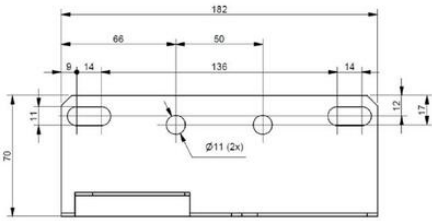
Power Losses



Allowed output power



All dimensions in mm



All dimensions in mm

