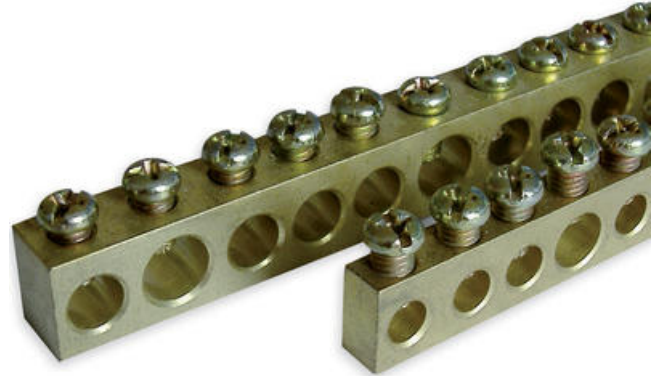


## BRASS EARTH DISTRIBUTION TERMINALS

MRS

MRS7010  
 MRS-S 9x16

- Screws in galvanized steel.
- High conductivity brass
- Complete with fixings
- Earthing Bars



### PRODUCT DESCRIPTION

Teknomegas earthing and neutral terminals offer lengths and connections.

The brass earth and neutral terminals comes in 1-meter lengths which can be cut down to suit an application.

With the various versions, Teknomega have designed holes at the end of the terminals making it easier to fix on to boards.

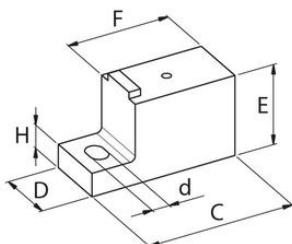
Double earthing terminals offers a double connection with blind holes which can have a cable lug up to 95mm<sup>2</sup>.

The terminal supports are made manufactured in polyamide 66 self-extinguishing V2-UL94.

## TECHNICAL DATA

### DIMENSIONS

Height	24 mm
Bar width	19 mm



Code	Reference	Terminal cross-section AuB	C (mm)	D (mm)	E (mm)	F (mm)	H (mm)	d (mm)
MRS7010	MRS-S 9x19	9 x 19	44	19	24	30	7	5.2

