

**KUEBLER - ABSOLUTE-CODED
 ANGULAR TRANSMITTER SENDIX M3658
 / M3678, MAGNET-CODED, CANOPEN,
 Ø36 MM
 SERIE M3658**



- Housing diameter Ø36 mm
- CANopen
- Safety-Lockplus™
- IP67/IP69K

PRODUCT DESCRIPTION

Sendix M3658 / M3678 is a series of single-core magnet-encoded axial outputs with CANopen interface and a resolution of up to 14 bits. Thanks to the contactless technology, the sensor is very compact and robust. As this technique allows for complete encapsulation of the sensor part on the sensor, a high enclosure class, shock resistance and a wide temperature range can be achieved. The sensor is therefore very suitable for applications where extreme environments or temperatures can occur, such as mobile applications. It comes with either M12 or PUR cable as standard. Sendix M3658 / M3678 is also available in a salt water resistant version.

Please refer to the images below for ordering information.

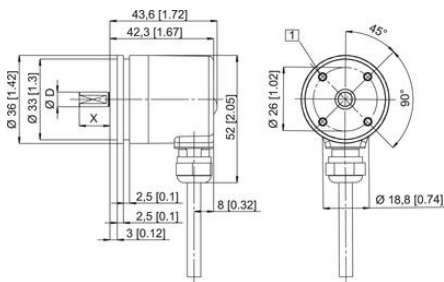
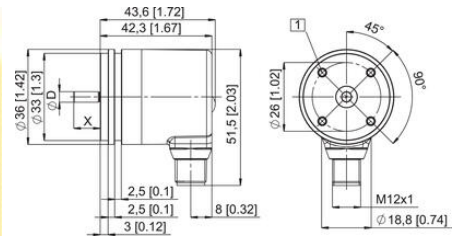
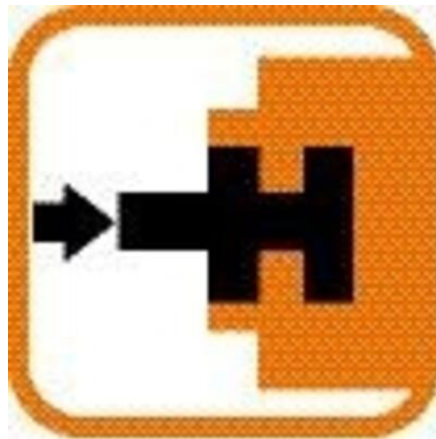
Order code shaft version	8.M3658	. 2 X C X .	21 1 X
	Type	a b c d	e f
a Flange	2 = synchro flange, ø 36 mm [1.42"]	d Type of connection	e Fieldbus profile
b Shaft (ø x L), with flat	3 = ø 6 x 12.5 mm [0.24 x 0.49"] 6 = ø 8 x 12.5 mm [0.32 x 0.49"] 5 = ø 1/4" x 12.5 mm [0.49"]	2 = radial cable, 1 m [3.28] PUR B = radial cable, special length PUR *) 4 = radial M12 connector, 5-pin	21 = CANopen
c Interface / power supply	C = CANopen DS301 V4.02 / 8 ... 30 V DC	*) Available special lengths (connection types B): 2, 3, 5, 8, 10, 15 m [6.56, 9.84, 16.40, 26.25, 32.80, 49.21'] order code expansion .XXXX = length in dm ex.: 8.M3658.23CB.2111.0030 (for cable length 3 m)	f Protection 1 = IP67 2 = IP69k
			<i>Optional on request</i> - Ex 2/22 (only for type of connection 4) - surface protection salt spray tested

Order code hollow shaft	8.M3678	. X X C X .	21 1 X
	Type	a b c d	e f
a Flange	2 = with spring element, long 5 = with stator coupling, ø 46 mm [1.81"]	d Type of connection	e Fieldbus profile
b Blind hollow shaft (insertion depth max. 18 mm [0.71"])	2 = ø 6 mm [0.24"] 4 = ø 8 mm [0.32"] 6 = ø 10 mm [0.39"] 3 = ø 1/4"	2 = radial cable, 1 m [3.28] PUR B = radial cable, special length PUR *) 4 = radial M12 connector, 5-pin	21 = CANopen
c Interface / power supply	C = CANopen DS301 V4.02 / 8 ... 30 V DC	*) Available special lengths (connection type B): 2, 3, 5, 8, 10, 15 m [6.56, 9.84, 16.40, 26.25, 32.80, 49.21'] order code expansion .XXXX = length in dm ex.: 8.M3678.52CB.2111.0030 (for cable length 3 m)	f Protection 1 = IP67 2 = IP69k
			<i>Optional on request</i> - Ex 2/22 (only for type of connection 4) - surface protection salt spray tested

TECHNICAL DATA

Connection	Cable, M12
-------------------	------------

Housing diameter	36 mm
IP class	IP67, IP69K
Mounting	Shoulder
Output	CANopen
Sensor type	Absolute
Shaft diameter max	8 mm
Shaft diameter min	6 mm
Supply voltage dc max	30 V DC
Supply voltage dc min	8 V DC
Temperature operational max	85 °C
Temperature operational min	-40 °C
Version	Singleturn

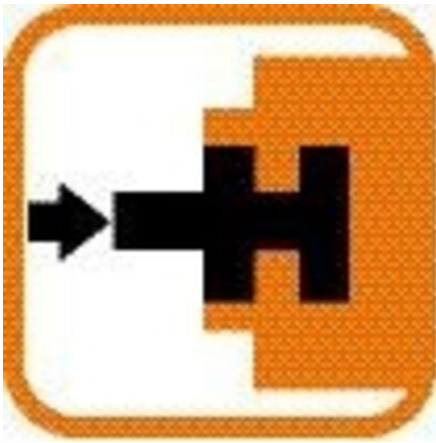


Interface	Type of connection	Cable (isolate wires individually before initial start up)	Signal	+V	0 V	CAN (GND)	CAN_H	CAN_L
C	2-W	Cable colour	BN	WH	GY	GN	YE	

Interface	Type of connection	M12 connector, 5-pin	Signal	+V	0 V	CAN (GND)	CAN_H	CAN_L
C	4	Pin	2	3	1	4	5	

Top view of mating side, male contact base





Interface	Type of connector	Cable (isolate unused wires individually before initial start up)					
C	2-P	Signal	+V	0V	CAN_GND	CAN_H	CAN_L
		Cable colour	BN	WH	GY	GN	YE

Interface	Type of connector	M12 connector, 5-pin					
C	4	Signal	+V	0V	CAN_GND	CAN_H	CAN_L
		Pin	2	3	1	4	5

Top view of mating side, male contact base



M12 connector, 5-pin