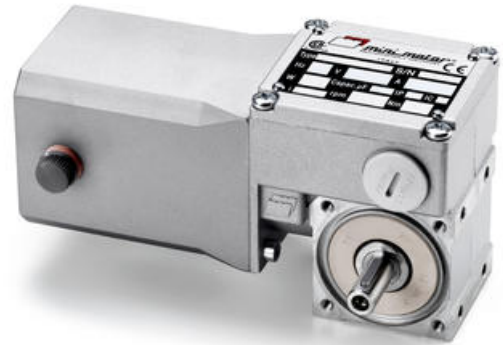


MINIMOTOR - BC2000MP WORM GEAR MOTOR

BC200012MP-112
12V dc 112rpm 2.44Nm

- Up to 5.2Nm
- 37W output power
- Up to 5.2Nm rated torque
- Compact and powerful
- IP65 as standard



PRODUCT DESCRIPTION

High quality, designed from the ground up to IP65 rated compact gear motor.

Physically smaller than the majority of similar powered gear motors due to the use of high quality components in precision manufacturing.

Ideally suited to many applications, including label and packaging machines, conveyors, pharmaceutical and medical machinery

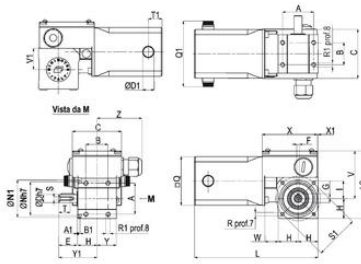
MOTOR: Direct current with permanent magnets. Totally enclosed. Class F winding. 12 or 24 Vdc. Absorbed power 60 W. IP65 protection according to CEI EN 60529.

GEAR UNIT: Die-cast aluminium case (UNI 5076). Centre distance 20 mm. Bronze ring with hardness 110 HB. Hardened steel screw with ground thread. Fluoridated polymer (FPM) grommets. Lubrication with synthetic oil (EP). 6 reduction gear ratios are available: 10/15/25/45/60/80.

[Please click here for 2D and 3D drawings.](#)

TECHNICAL DATA

Input voltage dc	12V
IP class	IP65
Nominal speed	112 rpm
Nominal torque	2,44 Nm
Output power	37 W
Rated current	5A A
Ratio	25:1



4D model selection



Electric motor

15.06.2017



Servo motor

15.06.2017



Worm gearmotors

15.06.2017



Brushless servomotors

15.06.2017



Clean products

15.06.2017



Gears

15.06.2017

Please see product description above for 2D and 3D drawings

Alfa Romeo	A	A1	B	B1	C	D	D1	E	F	G	H	I	L	L2	N	N1	O	Q	Q1	R	R1	S	S1	T	T1	V	V1	X	X1	Y	Y1	W	Z
BC2000 MP	35	1	25	24	165	9	13	35	2	162	22	20	190	77	38	42	55	74	M3	M5	M6	M8	M10	13	15	16	24	40	1	22	43	15	36