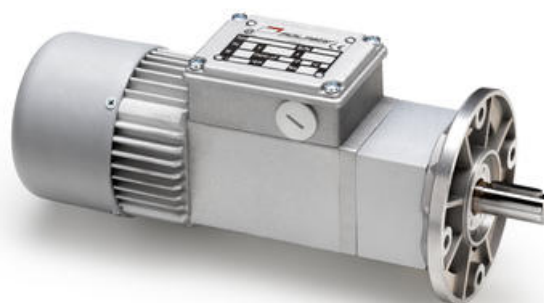


# MINIMOTOR - ACCE COAXIAL GEAR MOTOR WITH FURTHER PLANETARY REDUCTION

ACCE12MPB3-75  
12V dc 75rpm 4.3Nm B3 mount

- 12 or 24Vdc
- 4 to 37W delivered power
- Up to 23.5Nm rated torque
- B3 foot or B5 flange mounting
- IP65 as standard



## PRODUCT DESCRIPTION

High quality, designed from the ground up to IP65 rated compact gear motor.

Physically smaller than the majority of similar powered gear motors due to the use of high quality components in precision manufacturing.

Ideally suited to many applications, including label and packaging machines, conveyors, pharmaceutical and medical machinery

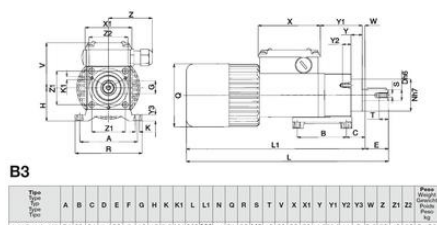
**MOTOR:** Direct current with permanent magnets. Totally enclosed with external ventilation. Class F winding. 12 or 24 Vdc power supply. Absorbed power 60 W. IP65 protection according to CEI EN 60529.

**GEAR UNIT:** First stage with die-cast aluminium case, second stage in steel. Case-hardened and hardened gear pairs with shafts rotating on roller bearings. Lubrication with long life oil. Sealing rings made in special rubber for high temperatures. 15 gear ratios (i) available, from 37 to 2209.5. Rated torque 23.5 Nm.

[Please click here for 2D and 3D drawings.](#)

## TECHNICAL DATA

Input voltage dc	12 Vdc
Nominal speed	75 rpm
Nominal torque	4,3 Nm
Output power	37 W
Rated current	5 A
Ratio	37:1



3D model selection



Brushed motor



Inverted motor



Worm gear motor



Brushless sensor motor



Clean product



Please see product description above for 2D and 3D drawings

**B3**

ACCE 12/24 MP	74	63	24	14	30	5	16	43	5,5	MA	202	232	41	81	80	MS	12	60	80	60	74	555	5	11	8	3	5	50	43	50	2	485
TYPE	A	B	C	D	E	F	G	H	K	K1	L	L1	N	O	R	S	T	V	X	X1	Y	Y1	Y2	V3	W	Z	Z1	Z2				

