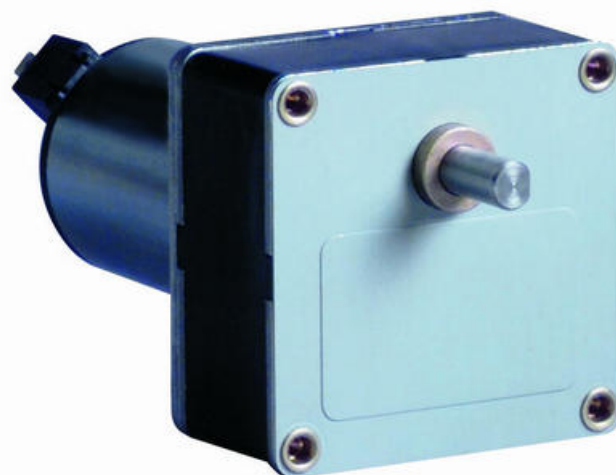


## CROUZET - 80807XXX DC MOTOR WITH SPUR GEARBOX - INDUSTRIAL DC SERIES

80807XXX

Spur RC65 gearmotor, 17W, 12/24Vdc, 1rpm→208rpm, 5Nm max

- 12 - 24 V dc, 5 Nm max, 17 W
- Speed range: 1 to 208 rpm
- High starting torque
- Compact, inline gear motor



### PRODUCT DESCRIPTION

Crouzet standard industrial DC motor with inline gearbox for low speed, high torque applications.

DC motors by nature offer a very high starting torque and are suited to a very wide range of applications, the gearbox is 'lubricated for life' to ensure consistent performance.

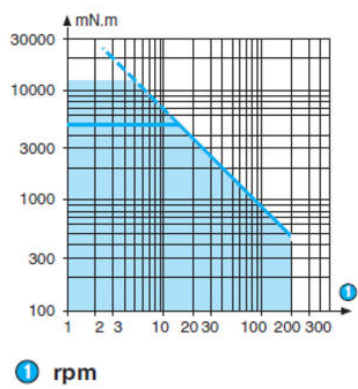
Options for a bespoke solution include, different power connections, EMC filter, encoder options & mechanical/electrical adaptations.

\* Smaller length motor for lower power applications is available

### TECHNICAL DATA

<b>IP class</b>	IP20
<b>Max. torque</b>	5 Nm
<b>Power</b>	17 W
<b>Ratio</b>	i=12.5→2500:1
<b>Shaft diameter</b>	8 mm
<b>Speed options</b>	1rpm→208rpm
<b>Supply voltage</b>	12 V DC, 24 V DC
<b>Type of gearbox</b>	Spur
<b>Weight</b>	0,8 kg

Curve: torque/nominal speed 808070



808070 standard

