

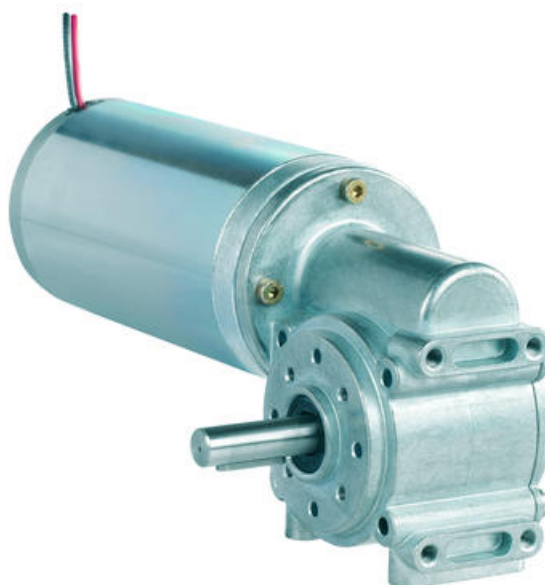
CROUZET - 80891*** WORM GEAR MOTOR

Industrial DC Series

80891XXX

Worm gearmotor, 255W, 24/48Vdc, 64rpm→640rpm, 10Nm max

- 24-48 Vdc, 10Nm max, 255W
- Speed range: 64 to 640 rpm
- High starting torque
- Compact, right angled gear motor



PRODUCT DESCRIPTION

This compact DC motor range with right angle worm gearbox offers very smooth and quiet performance and suited to applications requiring high torque (up to 10Nm nominal) and a higher operating speeds of up to 640rpm.

Supply voltage options are 24 and 48Vdc, and the standard motor which uses a high precision life-time lubricated gearbox, can be adapted to better suit the specific requirements of the application, adaption options include the addition of an encoder, EMC and minor mechanical/electrical modifications

Crouzet is world recognised as a premium mechatronic manufacturer and has well over 50years of experience in developing adapted motor solutions This range of motors is UL certified and also carries various other approvals, in line with all Crouzet products which are known across many automation industries.

TECHNICAL DATA

IP class	IP20
Max. torque	10 Nm
Power	255 W
Ratio	i=5→50:1
Shaft diameter	10 mm
Speed options	64rpm→640rpm
Supply voltage	24 V DC, 48 V DC
Type of gearbox	Worm
Weight	2,52 kg

