

CROUZET - 42MM DIAMETER DC MOTOR WITH PLANETARY GEAR - DCMIND BRUSH SERIES

8981AXXX

Planetary 42mm gearmotor 15W 12→48Vdc
9→324rpm 15Nm max

- 12→48 V dc, 15→35 W, 9→344 rpm, 15 Nm max
- Low noise/vibration
- High efficiency
- Long life
- IP65 as standard



PRODUCT DESCRIPTION

The DCmind Brush product family is Crouzet's new generation of high performance DC motors.

Engineered to be very quiet and energy-efficient, making it ideal for medical and laboratory applications and any application that requires low noise levels & low vibration - the motor without gearbox emits a noise level of 35 dBA, substantially quieter than the sound of rainfall (50 dB).

DCmind Brush has a lifespan of up to 24,000hr without load and up to 5,000hr with rated load.

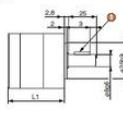
The motors are rated to IP65 dust/water protection class as standard with the ability to reach up to IP69K. DCmind is certified for UL and various other specific certificates within the medicine and household industry.

Options for adaptation to the standard motor include encoder, brake, special output shafts & general mechanical/electrical modifications developed according to your specific application requirements.

TECHNICAL DATA

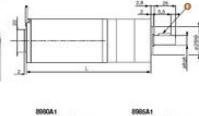
Diameter	42 mm
IP class	IP65
Life span	4000h
Max. torque	15 Nm
Power	15 W
Ratio	i=9→393:1
Shaft diameter	8 mm
Speed options	9rpm→324rpm
Supply voltage	12 V DC, 24 V DC, 48 V DC
Type of gearbox	Planetary 1→3 stages

Planetary gearbox e 42 type A1



- 1 Parallel key 3 x 3 x 16 DIN6885
 - 2 M3, depth 9
 - 3 4 x M3 at 90°, depth 7 over Ø 32
 - 4 4 x M4 at 90°, depth 10 over Ø 36
- L1 1 stage: 48.5 max.
 L1 2 stages: 61.6 max.
 L1 3 stages: 74.7 max.

BB1A1 - BBGA1 - BBGA1



- | | | |
|--|--|--|
| <p>BB1A1</p> <p>L 1 stage: 119.9 max.
 L 2 stages: 133 max.
 L 3 stages: 146.1 max.</p> | <p>BBGA1</p> <p>L 1 stage: 135 max.
 L 2 stages: 148.1 max.
 L 3 stages: 161.2 max.</p> | <p>BBGA1</p> <p>L 1 stage: 161.1 max.
 L 2 stages: 174.2 max.
 L 3 stages: 187.3 max.</p> |
|--|--|--|

- 1 Parallel key 3 x 3 x 16 DIN6885
- 2 M3, depth 9
- 3 4 x M3 at 90°, depth 7 over Ø 32
- 4 4 x M4 at 90°, depth 10 over Ø 36