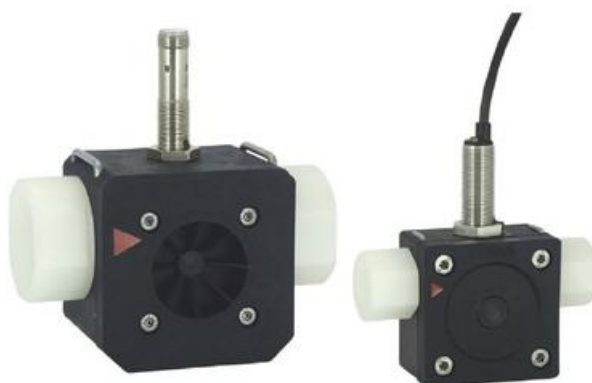


## HONSBERG - RRI SERIES FLOW METER

### Rotor

RRI-010GVP020  
Flow sensor 3/8", 0,1-1,5l/min, PNP

- For liquids up to 16 bar pressure
- Flow range from 0.1 to 100 l/min. water
- Connection 3/8" or 1"



### PRODUCT DESCRIPTION

Model RRI is a rotor sensor in plastic with inductive reading. The design offers a lot of options in terms of installation as it can be mounted in most locations and does not require any calming section either before or after. It has high resolution and is suitable for accurate measurement of flows of liquids in applications within liquid dosing or accurate volume calculation.

### TECHNICAL DATA

<b>Accuracy</b>	± 3% of measurement value
<b>Connection type</b>	Internal thread, G 3/8 "
<b>Electrical connection</b>	2m cable or M12x1, 4-pole
<b>Flow max</b>	1,8 l/min
<b>Flow range max</b>	1,5 l/min
<b>Flow range min</b>	0,1 l/min
<b>Frequency max</b>	10 Hz
<b>Frequency min</b>	1000 Hz
<b>Function</b>	Rotor, inductive sensor
<b>IP class</b>	IP67
<b>Load max</b>	200 mA
<b>Material drum</b>	Ceramic
<b>Material of body</b>	PPS, Questra
<b>Material of connection</b>	PVDF
<b>Material of rotor</b>	PVDF
<b>Material of seals</b>	Viton
<b>Material storage</b>	Igilidur X

<b>Materials clips</b>	Stainless steel 301
<b>Number of pulses/L Ca</b>	10200
<b>Power consumption</b>	10 mA
<b>Pressure drop</b>	Approximately 0.5 bar at maximum flow
<b>Pressure range max</b>	16 bar
<b>Repeatability</b>	1 %
<b>Signal outputs</b>	PNP, square wave
<b>Temperature of media to</b>	60 °C
<b>Type of flow component</b>	Flow Measuring
<b>Weight</b>	0,2 kg
<b>Viscosity max</b>	10 cSt
<b>Viscosity min</b>	1 cSt
<b>Voltage dc max</b>	30 V
<b>Voltage dc min</b>	10 V

