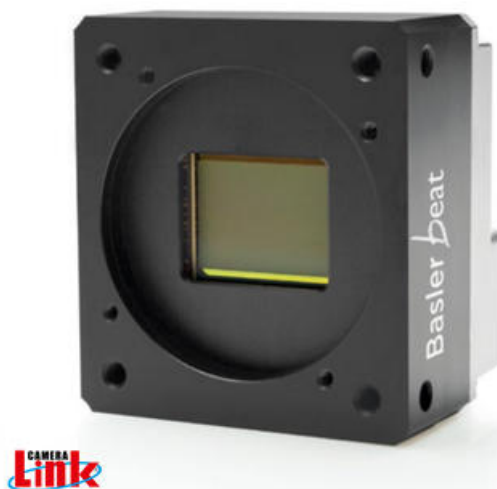


## BASLER BEAT CAMERALINK CAMERAS

High Resolution

BEA4000-62KM  
 Beat CameraLink, CMV12000 1.75" CMOS, 62fps,  
 Mono, 12mp

- Resolution: up to 12 MP and frame rate: up to 62 fps
- Supported by Pylon Suite software and open-source SDKs for easy image acquisition and fast application development
- Super sensitive CMOS sensor
- More than 60 frames per second
- High speed and Excellent Quality



### PRODUCT DESCRIPTION

The Basler Beat series of cameras offer high resolution, super-sensitive, CMOSIS sensor CMV12000. The image quality achievable with these cameras is comparable with that of CCD sensor cameras and exceeds the image quality offered by older CMOS sensors. Featuring both mono and colour models with progressive scan and global shutter, the Basler Beat camera has a full resolution of 12 megapixels, offering high capture rates and high resolution with superior image quality.

Basler Beat Product Features:

- Next-Generation CMOS sensors
- 12 megapixels
- More than 60 frames per second
- Easily integrated due its compact housing
- Basler pylon Camera Software Suite
- Compatible with all common frame grabbers for maximum grabbing speed and high bandwidth connection

Examples of application areas:

- Semiconductor manufacturing
- Electronics manufacturing
- ITS (Intelligent Traffic Systems)
- Medical Applications (Medical Imaging)

### TECHNICAL DATA

<b>Approvals</b>	CE, EAC, FCC, GenICam, RoHS, UL
<b>Frame rate max</b>	62 fps
<b>Height</b>	62 mm
<b>Interface</b>	Camera Link
<b>IP class</b>	IP30
<b>Length</b>	40 mm
<b>Lens barrel</b>	F-mount, M42-mount or M58-mount

<b>Mono/color</b>	Mono
<b>Operating temperature</b>	0°C ... 60°C
<b>Pixel size</b>	5.5 x 5.5 µm
<b>Power consumption</b>	6 W
<b>Resolution</b>	12MP
<b>Resolution max</b>	4096 x 3072 px
<b>Sensor model</b>	CMV12000
<b>Sensor size</b>	1.75"
<b>Sensor supplier</b>	ams
<b>Sensor Type</b>	CMOS
<b>Shutter type</b>	Global
<b>Weight</b>	210 g
<b>Width</b>	56 mm

