



DATALOGIC - CBX 100

CBX100

ID & Vision compact connection/junction box

- Fast, easy barcode reader connection
- Backup function option
- ID-NET™ Interface



PRODUCT DESCRIPTION

The CBX 100 connection box has been produced to facilitate installation of Datalogic's 1D and 2D barcode readers. The backup module BM100 with reset function is available as an optional extra.

CBX100 is compatible with Datalogic readers in the 2K, 4K, 6K, 8K and Matrix series.

ID-NET™ is a dedicated high-speed interface between barcode readers. It permits speeds of up to 1 Mbit/s and is integrated as standard in all boxes in the CBX and Quick Link series. ID-NET™ is used as a complement to the standard main interface and can be configured as a station with multiple readers. This allows up to 16 readers to be connected which read different sides of the same object. In addition, ID-NET™ can be configured as multiple stations with individual readers, which allows up to 32 readers to be connected which read objects on each individual station, independently of one another.

TECHNICAL DATA

IP class	IP65
Power consumption	2,5 W
Storage temperature max	70 °C
Storage temperature min	-20 °C
Temperature operational max	50 °C
Temperature operational min	0 °C
Weight	380 g
Voltage dc max	30 V
Voltage dc min	10 V



Figure A

- ① Indicator LEDs
- ② Cover Screws (2)
- ③ Compression Connectors (4)
- ④ 25-pin Device Connector



Figure B

- ① Power switch (ON/OFF)
- ② Auxiliary Port Connector
- ③ Mounting Holes (2)
- ④ ID-NET™ Termination Resistance Switch
- ⑤ Indicator LEDs
- ⑥ Backup Module Connector
- ⑦ Spring Clamp Terminal Blocks
- ⑧ RS485 Termination Resistance Switch
- ⑨ Power Source Selector
- ⑩ Shield to Protection Earth Selector
- ⑪ Chassis Grounding Selector

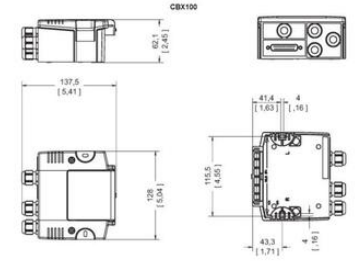


Figure A

- ① Indicator LEDs
- ② Cover Screws (2)
- ③ Compression Connectors (4)
- ④ 25-pin Device Connector



Figure B

- ① Power switch (ON/OFF)
- ② Auxiliary Port Connector
- ③ Mounting Holes (2)
- ④ ID-NET™ Termination Resistance Switch
- ⑤ Indicator LEDs
- ⑥ Backup Module Connector
- ⑦ Spring Clamp Terminal Blocks
- ⑧ RS485 Termination Resistance Switch
- ⑨ Power Source Selector
- ⑩ Shield to Protection Earth Selector
- ⑪ Chassis Grounding Selector

