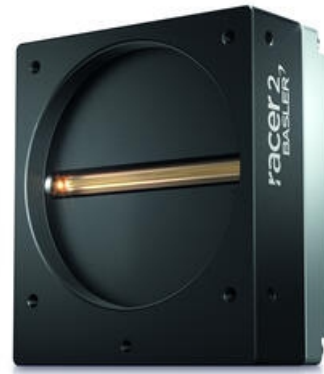


BASLER RACER 2L LINE SCAN CAMERAS

CoaXpress Line Cameras

R2L8192-200CM

- 8 k & 16 k resolution and up to 200 kHz line rate
- Supported by Pylon software suite for easy image acquisition
- Monochrome Cameras
- CoaXpress (CXP-12) interface
- Lens Mount: M72



PRODUCT DESCRIPTION

Racer 2L is the latest addition to the popular Racer series. Featuring the same reliability, high performance, and easy integration through the Pylon software. To complement the high resolution to the impressive line speed, the Racer 2L come with CoaXpress interface. This opens the possibility of using Basler's CoaXpress cards and its Visual Applets (VA).

Visual Applets allow for pre-processing on the frame grabber reducing CPU loading and enabling higher inspection speeds.

For further information on the Racer series or to learn how Vision Applets can dramatically reduce your inspection times / CPU loading please contact us.

TECHNICAL DATA

Approvals	CE, EAC, FCC, GenICam, RoHS, UL
Digital inputs	3
Digital outputs	3
Height	90 mm
IP class	IP30
Length	36 mm
Lens barrel	M72x0.75-mount
Line speed max	200 kHz
Mono/color	Mono
Operating temperature	0°C ... 50°C
Pixel size	7 x 7 µm
Power consumption	8 W
Resolution	8k
Resolution max	8192 x 1 px
Sensor model	GL7008

Sensor size	57.34 mm
Sensor supplier	Gpixel
Sensor Type	CMOS
Shutter type	Global
Weight	420 g
Width	80 mm