



LUTZE DC CIRCUIT PROTECTION

716410
LOCC-Box-NET Electronic fuse with comms, 12-24V
dc, 1-10A,



PRODUCT DESCRIPTION

TECHNICAL DATA

INPUT DATA

Input current max	10 A
Operating voltage dc min	10 V
Operating voltage dc max	32 V
Power through distribution beam max	40 A

OUTPUT DATA

Output current max	10 A
Adjustable current min	1 A
Adjustable current max	10 A
Adjustable steps	1 A
Voltage drop over semiconductor	170 mV
Capacitance max	10000 μ F

DIMENSIONS

Width	8,1 mm
Depth	116 mm

Height 114,5 mm

CONNECTION DATA

Cross section min 0,25 mm²

Cross section max 2,5 mm²

IP class IP20

APPROVALS

Approvals CE, cULus, GL

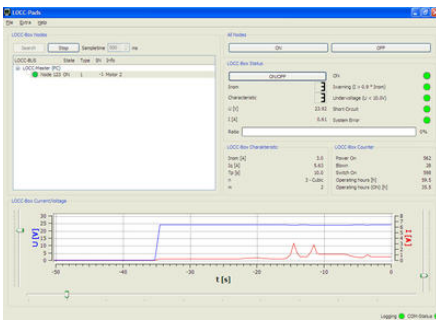
EMC EN61000-6-2, EN61000-6-3

ADDITIONAL DATA

Temperature operational min -25 °C

Temperature operational max 50 °C

Weight 120 g



The screenshot shows the 'LOCC-Box Logging' window with a table of event logs. The table has columns for Date/Time, Node, Status, Error, I [A], U [V], and Info.

Date/Time	Node	Status	Error	I [A]	U [V]	Info
5 2009-02-16 16:09:46	123	OFF	0.00	0.00		Motor 2
6 2009-02-16 16:09:48	123	ON	0.26	23.92		Motor 2
7 2009-02-16 16:10:15	123	OFF	0.00	0.00		Motor 2
8 2009-02-16 16:10:30	123	OFF	0.00	0.00		Motor 2
9 2009-02-16 16:11:08	123	ON	0.00	23.92		Motor 2
10 2009-02-16 16:11:28	123	ON	Inva	3.07	23.77	Motor 2
11 2009-02-16 16:11:29	123	ON	Inva	0.64	23.92	Motor 2
12 2009-02-16 16:11:31	123	ON	Inva	2.78	23.77	Motor 2
13 2009-02-16 16:11:32	123	ON	Inva	1.09	23.77	Motor 2
14 2009-02-16 16:12:16	123	ON	Inva	1.54	23.77	Motor 2
15 2009-02-16 16:12:17	123	ON	Inva	0.58	23.82	Motor 2
16 2009-02-16 16:12:26	123	ON	Inva	0.99	23.77	Motor 2
17 2009-02-16 16:12:27	123	ON	Inva	0.51	23.92	Motor 2

