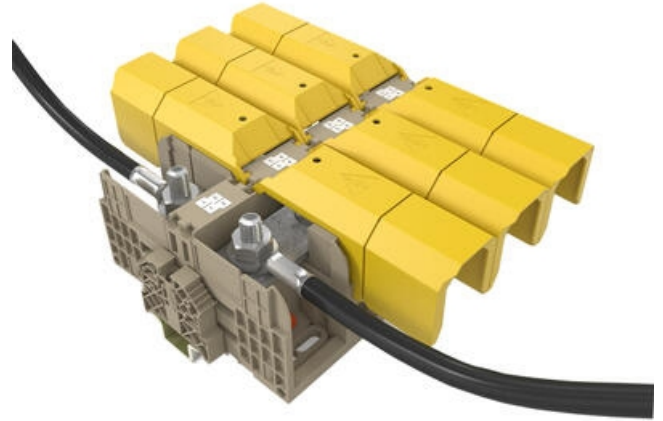


## HIGH-POWER STUD TERMINALS - HSKG 35-300MM<sup>2</sup>

HSKG

17170.2  
HSKG 35/M6/B/B, 35mm<sup>2</sup> Dual M6 stud terminal

- Dual stud connection
- Direct & TS35 mount
- IP20 with Gull Wing Covers fitted
- Material polyamide 6.6
- Fire-resistance class V0



### PRODUCT DESCRIPTION

The newest generation of stud terminals from CONTA-CLIP offers secure connections for all high power conductors.

The HSKG stud terminals are available with stud sizes of with M6, M8, M10, M12 and rated current is from 125 A to 520A at a rated voltage of 1000 V. For higher currents the terminals can be easily and safely cross connected by snapping out a section of the built in partition plate.

The wire connection range is from 2.5 mm<sup>2</sup> to 300 mm<sup>2</sup>. and crimped lugs are used to fit the cables to the busbar using the hexagonal nut with built in washer.

When used together with the ADH hinged covers, the HSKG stud terminals provide outstanding finger and touch protection. The ADH cover is easy to mount; it simply snaps into the side walls of the stud terminals as it is closed.

In this quick and reliable way, touch-safe protection of the terminal points is always guaranteed.

Added features include -

- Measuring Point located on the ADH covers to allow probes to be inserted without exposing the conductor.
- Direct or DIN Rail Mount
- Interlocking housings for improved stability
- Cross connectable

## TECHNICAL DATA

### GENERAL DATA

Rated impulse voltage	8 kV
Colour	Beige
Rated wire cross section	35 mm <sup>2</sup>
Rated voltage IEC	1000 V
Mounting	TS 35
Contamination degree	3
Rated current IEC	125 A
Approvals	UL, CSA, CSA US, cUL, KEMA KUR
Overvoltage category	III

### DIMENSIONS

Contact clamping area	≤ 50 mm <sup>2</sup>
Length with TW/ADH	131 mm
Height with TW/ADH	60 mm

Height TS 35/7.5	51 mm
Length	107 mm
Width	27 mm

## CONNECTION DATA

Torque max	6 Nm
Stud size	M 6
Connections	2
Torque min	3 Nm
Rated wire cross section to (AWG)	1/0
Rated wire cross section from (AWG)	14
DIN 46235: 1 cable lug per side, min.	6 mm <sup>2</sup>
DIN 46234 / 1 cable lug per side, min.	2,5 mm <sup>2</sup>
DIN 46235: 1 cable lug per side, max.	25 mm <sup>2</sup>
Number of levels	1
DIN 46234 / 1 cable lug per side, max.	50 mm <sup>2</sup>

## MATERIALS

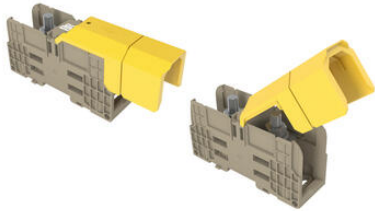
Flammability class	UL94-V0
Operating temperature from	-40 °C
Operating temperature to	120 °C
Insulation material	Polyamide 6.6

## APPROVALS

UL test standard	UL 1059
Rated current CSAus	130 A
Rated voltage CSAus	1000 V
Rated current cUL	130 A
Rated voltage UL	1000 V
CSA test standard	C22.2 No 158
KEMA KEUR test standard	EN 60947-7-1:2028
Rated voltage cUL	1000 V
CSAus test standard	UL 1059
Rated current CSA	130 A
Rated voltage CSA	1000 V
cUL test standard	C22.2 No 158

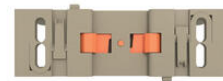
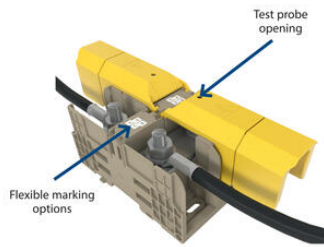
## ADDITIONAL DATA

<b>Pack size</b>	10
<b>Country of origin</b>	DE
<b>Tariff code</b>	85369010
<b>Weight</b>	88,6 g

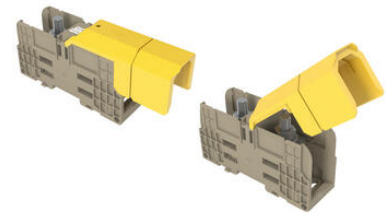
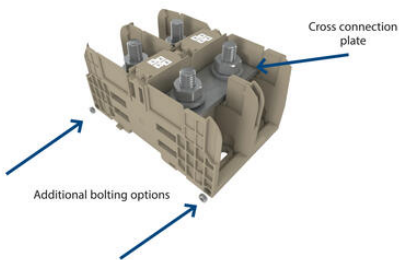


### Using the ADH covers

Individual ADH... covers are available for each width of stud terminal. They are designed for the different sizes and the corresponding clearance and creepage distances. It is also possible to shorten the covers along pre-creased breakage points. The ADH cover is attached by pressing the cover down onto the base terminal so that the cover snaps onto the terminal.

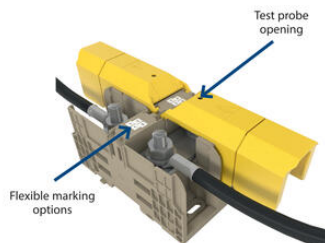


TS mount / direct mount



### Using the ADH covers

Individual ADH... covers are available for each width of stud terminal. They are designed for the different sizes and the corresponding clearance and creepage distances. It is also possible to shorten the covers along pre-creased breakage points. The ADH cover is attached by pressing the cover down onto the base terminal so that the cover snaps onto the terminal.



TS mount / direct mount

