

## ACTUONIX - MINIATURE LINEAR ACTUATOR PQ12

PQ12-30-12-S  
 12V, 20mm stroke, up to 18N force with limit switches

- Up to 50N force
- Up to 28mm/s speed
- 20mm stroke
- 6v or 12v dc with potentiometer or limit switches
- 6V RC controller options



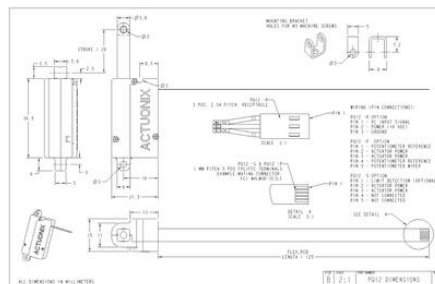
### PRODUCT DESCRIPTION

### TECHNICAL DATA

|                                    |         |
|------------------------------------|---------|
| <b>Back drive force</b>            | 9 N     |
| <b>Duty cycle</b>                  | 20 %    |
| <b>IP class</b>                    | IP54    |
| <b>Nominal speed, no load</b>      | 28 mm/s |
| <b>Ratio</b>                       | 30:1    |
| <b>Sound level</b>                 | 55 dB   |
| <b>Static load max</b>             | 18 N    |
| <b>Stroke</b>                      | 20 mm   |
| <b>Supply voltage</b>              | 12 V DC |
| <b>Temperature operational max</b> | 50 °C   |
| <b>Temperature operational min</b> | -10 °C  |
| <b>Weight</b>                      | 15 g    |

#### PQ12-GG-VV-C

| feature  | options  |
|--|--|
| <b>GG:</b> Gear reduction ratio (refer to load curves above) | <b>30, 63, 100</b><br>(lower ratios are faster but push less force, and vice versa)              |
| <b>VV:</b> Voltage   | <b>6, 12</b><br>(DC volts)   |
| <b>C:</b> Controller   | <b>P</b> Potentiometer Feedback<br><b>S</b> Limit Switches<br><b>R</b> RC Linear Servo (6V Only) |



#### PQ12-GG-VV-C

| feature  | options  |
|--|--|
| <b>GG:</b> Gear reduction ratio (refer to load curves above) | <b>30, 63, 100</b><br>(lower ratios are faster but push less force, and vice versa)              |
| <b>VV:</b> Voltage   | <b>6, 12</b><br>(DC volts)   |
| <b>C:</b> Controller   | <b>P</b> Potentiometer Feedback<br><b>S</b> Limit Switches<br><b>R</b> RC Linear Servo (6V Only) |

