

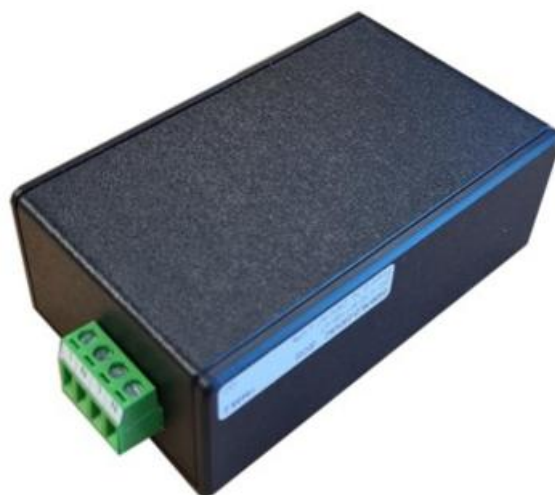
## GSM-TMM SIMPLE SMS MODULE

### GSM-TMM

16489.2

GSM-TMM, Auto Send SMS Module, 10...30V dc, 24V ac

- SMS Send on Power Up
- 230V AC and 12VDC/24VADC versions available
- Simple programming
- Supporting LTE-M, NB-IOT, 2G
- LED status indication



### PRODUCT DESCRIPTION

Simple compact SMS device that sends a single SMS to 1-5 recipients on power up, with or without confirmation.

The GSM-TMM (Trigger Message Module) can be wired in series or parallel with any powered device, such as beacon, sounders or switched output. The unit can be programmed via USB (no external power required for programming)

Standard micro SIM, SMA antenna connection.

## TECHNICAL DATA

### GENERAL DATA

Number of inputs	1
Supply voltage	10..30V dc; 24V ac $\pm$ 10%
Current consumption	12V-170mA; 24V-85mA; 24VAC ~210mA
Mounting	Direct mount
GPS	No
Electromagnetic compatibility	EN55011, EN61326-1
Operating temperature from	-30 °C
Operating temperature to	70 °C

### DIMENSIONS

Length	106 mm
Width	54 mm
Height	39 mm

<b>Weight</b>	147 g
---------------	-------

## CONNECTIONS

<b>Connection type</b>	Pluggable
<b>Cross section single wire from</b>	0,2 mm <sup>2</sup>
<b>Cross section single wire to</b>	2,5 mm <sup>2</sup>
<b>Stripping length</b>	6 mm

## GSM/GPS DATA

<b>2G</b>	Quad-band GSM bands: 850, 900, 1800 and 1900 MHz
<b>3G</b>	LTE CAT-M: B1/B2/B3/B4/B5/B8/B12/B13/B14/B18/B19/B20/B25/B26/B27/B28/B66/B85
<b>SIM card</b>	Nano-SIM
<b>Antenna GSM</b>	50 Ohm, SMA-plug

## ADDITIONAL DATA

<b>DIN-VDE Spec</b>	Low Voltage Directive (LVD) 2014/35/EU, according requirements of EN 62477-1 Directive 2014/30/EU, in compliance with EN 55011 and EN 61326-1, RED 2014/53/EU
<b>IP class</b>	IP20
<b>Pack size</b>	1
<b>Country of origin</b>	NL
<b>Tariff code</b>	85176990

