

**ASCO - 2/2 CRYOGENIC VALVE 1/4" - 3/4"**SCE222E002LT
VALVE 2/2 NC 1/2" 230VAC

- Normally Closed
- Media temperature -196 °C to +90 °C
- Working pressure 0 to 9 bar
- Housing in brass

**PRODUCT DESCRIPTION****TECHNICAL DATA****GENERAL DATA**

| | |
|--------------------------------|---------|
| IP class | IP65 |
| Flow factor / flow coefficient | 3,3 |
| Connection | 1/2 BSP |

MATERIAL DATA

| | |
|-------------------|-------|
| Material seat | Brass |
| Material of seals | PTFE |
| Material body | Brass |

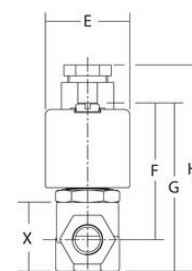
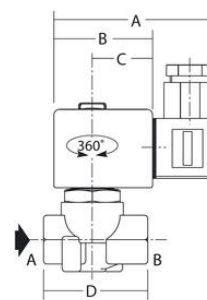
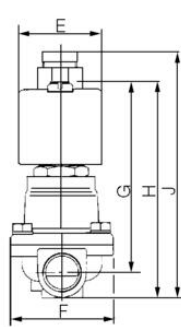
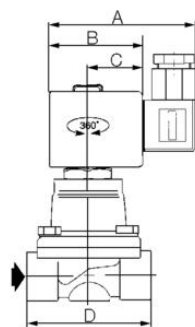
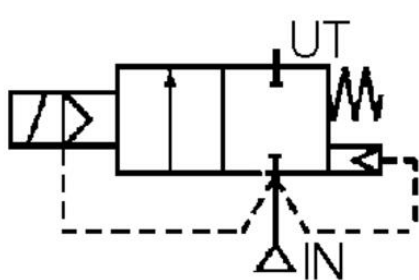
TEMPERATURE DATA

| | |
|---------------------------|---------|
| Temperature of media from | -196 °C |
| Temperature of media to | 90 °C |

ADDITIONAL DATA

| | |
|-------------------|--------|
| Weight | 1,1 kg |
| Close delay | 75 ms |
| Power consumption | 16,7 W |

| | |
|-------------------------------|------------------------|
| Throughput | 16 mm |
| Type of valve | Solenoid valve |
| Response time off | 100 ms |
| Voltage AC | 230 V |
| Temperature operational min | -20 °C |
| Temperature operational max | 50 °C |
| Differential air pressure max | 9 bar |
| Differential pressure max | 9 bar |
| Differential pressure min | 0 bar |
| Flow max | 55 l/min |
| Function 1 | 2/2 |
| Function 2 | Normally Closed (SPST) |
| Material flask | Brass |
| Material piston ring | PTFE flask filled |
| Material plunger | Stainless steel |
| Material short-circuit ring | Copper |
| Material piston rod seal | PTFE |
| Material spring | Stainless steel |
| Mounting | Upright, Vertical |



| Ventil | A | B | C | D | E | F | G | H | J |
|--------------|----|----|----|----|----|----|-----|-----|-----|
| SCE222E002LT | 80 | 50 | 30 | 70 | 45 | 59 | 104 | 118 | 131 |
| SCE222F003LT | 80 | 50 | 30 | 70 | 45 | 59 | 108 | 124 | 137 |

