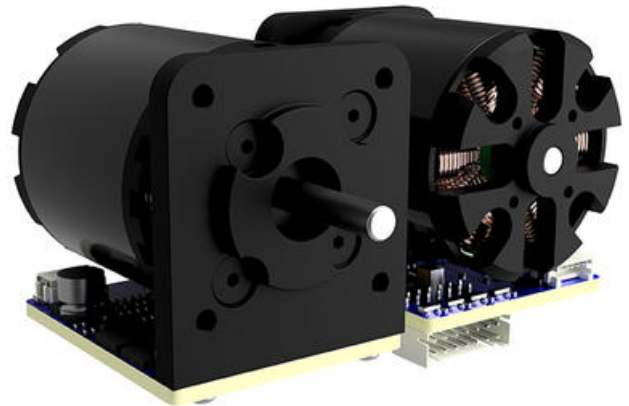


SIMPLEX MOTION - SE SERIES

Compact BLDC servomotor with integrated control

SE010A

- Standalone / comms based control
- 12-48Vdc, >120mN, >4000rpm
- 4096 ppr encoder
- 12 inputs / 4 outputs
- Modbus RTU / CANOpen



PRODUCT DESCRIPTION

SE-series is a compact, brushless DC-motor with integrated drive and standalone control capability. The motor has an outrunner rotor with permanent magnets making it very powerful relative its size and weight.

The patented high resolution encoder technology has no rotating parts and provides a high level of positional accuracy.

The 3 different models are available, all compatible with NEMA standard, and supply voltages of 12-48Vdc. The integrated controller performs closed loop control of speed and position, it supports acceleration and deceleration ramping for smooth motion patterns. The controller also provides protection from over-current, over-voltage, excessive temperature and torque.

To facilitate standalone operation, the built-in control unit has 8 digital inputs, 4 analogue inputs and 8 digital outputs. These can be configured to provide simple direct control using buttons and potentiometers interfaces and allow the SE series to be used outside of PLC based system control.

TECHNICAL DATA

Analogue Inputs	4
Digital inputs	8
Digital outputs	4
Max current	4,5 A
Max. torque	0,2 Nm
Nominal current	3 A
Nominal speed	4000 rpm
Nominal torque	0,06 Nm
Number of pulses per revolution	4096
Shaft diameter	5 mm
Supply voltage	24 V
Weight	0,08 kg