

## MINIMOTOR - SXCFSSTAINLESS STEEL WORM GEAR MOTOR

SXCFSST 80/100-429  
230V 429rpm 6.6 Nm

- IP69K sealing
- Full stainless steel outer parts
- Up to 70Nm rated torque
- Brushless AC motor with resolver feedback



### PRODUCT DESCRIPTION

**MOTOR:** Brushless three-phase 4-pole motor, totally enclosed. Rotor with NdFeB magnets. Thermal cutoff. Winding Class H. Protection IP69K in compliance with IEC/EN 60529 standards. 2-Pole resolver feedback. Bearings with reduced backlash with special grease and high-temperature rubber seal rings. Easy and quick to clean thanks to the smooth surface design. Power 345 to 740W.

**GEAR UNIT:** worm gear unit with stainless steel gearcase. 50 mm centre distance. Bronze crown. The worm is made of tempered steel, with ground thread. Seal rings in special high-temperature rubber. Lubrication with special long-lasting oil for use in food areas (H1).

There are 12 available gear ratios (i), from 7 to 100.

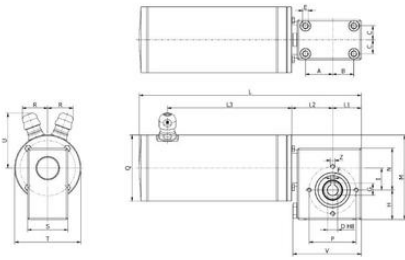
Rated torque up to 70.0 Nm.

[Please click here for 2D and 3D drawings](#)

### TECHNICAL DATA

<b>Input voltage ac</b>	230V
<b>IP class</b>	IP69K
<b>Nominal speed</b>	429 rpm
<b>Nominal torque</b>	6,6 Nm

<b>Output power</b>	345 W
<b>Rated current</b>	2,63 A
<b>Ratio</b>	7:1



Please see product description above for 2D and 3D drawings

Type Type Type	A	B	C	D	E	F	Q	H	I	L	L1	L2
SXCFSS80100	46	56	30	25	M8x11	6	28,3	60	50	387	66	70
SXCFSS104M	48	58	30	25	M8x11	6	28,3	60	50	402	66	68

Type Type Type	L3	M	N	P	Q	R	S	T	U	V	Z	Free space between Pins AG
SXCFSS80100	220,5	155	81	75	90	33,5	81	90	60,5	135	M8x8	13,78
SXCFSS104M	227,5	170	81	75	120	33,5	81	120	76	135	M8x8	18,20