

## MINIMOTOR - PCFSS STAINLESS STEEL WORM GEAR MOTOR

PCFSS 55/50-600  
230V 600rpm 1.3 Nm

- IP69K sealing
- Full stainless steel outer parts
- Up to 18Nm rated torque
- Brushless AC with resolver feedback



### PRODUCT DESCRIPTION

Motor: 4 pole sinusoidal brushless, featuring NdFeB rare earth magnets and sealed in stainless steel housing.

Thermal protection, Class H winding and IP69K protection according to IEC/EN 60529 standards.

2 pole resolver for feedback. Roller bearings with reduced backlash for smoother operation and high temperature grease.

Gear unit: Stainless steel body, bronze crown gear. Tempered steel screw rotating on spherical ball bearings and lubricated with NSF-H1 oil for a long life.

Rated torque 80Nm.

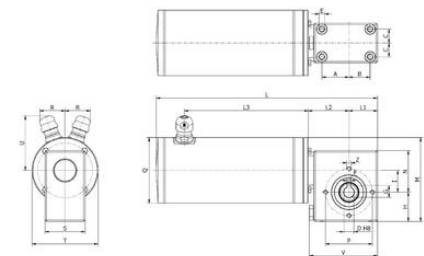
Designed as per EHEDG hygiene guidelines requirements

[Please click here for 2D and 3D drawings.](#)

### TECHNICAL DATA

<b>Input voltage ac</b>	230V
<b>IP class</b>	IP69K

<b>Nominal speed</b>	600 rpm
<b>Nominal torque</b>	1,3 Nm
<b>Output power</b>	94 W
<b>Rated current</b>	0,67 A
<b>Ratio</b>	5:1

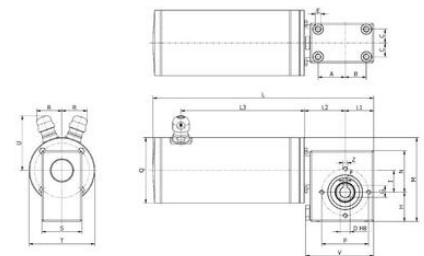


Type Type Type	A	B	C	D	E	F	G	H	I	L	L1	L2
PCFSS5550	37	29	19	14	Mlx11	5	16,3	40	30	297,5	39	55,5
PCFSS8050	37	29	19	14	Mlx11	5	16,3	40	30	302,5	39	55,5

Type Type Type	L3	M	N	P	Q	R	S	T	U	V	Z	Phase Output Power Per No.
PCFSS5550	164,5	115	57	64	68	33,5	55	90	47,5	93	Mlx7	6,80
PCFSS8050	169,5	115	57	64	90	33,5	55	90	60,5	93	Mlx7	9,10

3D model selection

Please see product description above for 2D and 3D drawings



Type Type Type	A	B	C	D	E	F	G	H	I	L	L1	L2
PCFSS5550	37	29	19	14	Mlx11	5	16,3	40	30	297,5	39	55,5
PCFSS8050	37	29	19	14	Mlx11	5	16,3	40	30	302,5	39	55,5

Type Type Type	L3	M	N	P	Q	R	S	T	U	V	Z	Phase Output Power Per No.
PCFSS5550	164,5	115	57	64	68	33,5	55	90	47,5	93	Mlx7	6,80
PCFSS8050	169,5	115	57	64	90	33,5	55	90	60,5	93	Mlx7	9,10

3D model selection

Please see product description above for 2D and 3D drawings