



GNR SERIES 45MM RELAY

GNR35DHZ

DIN Rail SSR 45mm 600V ac 35A, 4-32V dc In, ZC



- Load current 35A and 45A
- Operating Voltage 48-600 VAC
- Control Voltage 4-32 VDC, 90-140 VAC and 180-260 VAC
- Broad range of power ratings



PRODUCT DESCRIPTION

These relays offer a broad range of power ratings which makes them suitable for diverse applications. Their high reliability and efficient design have made of them a market favorite for many years.

- Current ratings of 35 and 45 amps
- Output voltage rating: 48-600 VAC
- Direct Bond Copper (DBC) Substrate
- LED input status indicator
- UL 508 Endurance Rating for Enhanced Reliability
- UL/CSA/TUV Approved, CE Compliant
- Built-in overvoltage protection
- DIN Rail or Panel Mount
- Zero voltage or Instantaneous turn-on output

TECHNICAL DATA

OVERVIEW

Output current	35 A
Output voltage	48-600V ac
Control voltage	4-32V dc
Connection	Screw connection
Type of control	Zero voltage turn on
Activation	0 V
Additional features	Relay configuration

OUTPUT SPECIFICATION

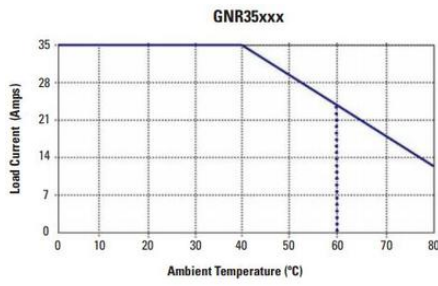
Output voltage	48-600V ac
Leakage current at V max, T=25°C max	1 mA
Peak voltage	1100 V
Peak current	130 A
Voltage drop over semiconductor at max	1,35 V
Number of poles	1
I²t value	2230 A ² s

INPUT SPECIFICATION

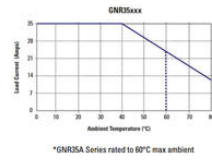
Control voltage	4-32V dc
Turn-off voltage	1 V
Input current min	16 mA
Input current max	19 mA
Response time	10 ms
Release time	10 ms

GENERAL SPECIFICATION

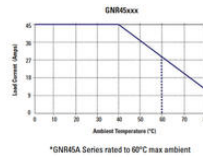
Insulation voltage in/out	4000 V
Temperature operational min	-20 °C
Temperature operational max	80 °C
Storage temperature max	100 °C
Storage temperature min	-40 °C
Weight	400 g
Height	88,1 mm
Width	45 mm
Depth	120,7 mm
LED indication	Input status indication
Approvals	CE, CSA, EMC, UL
IP class	IP20
Load voltage	AC



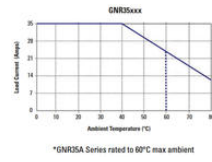
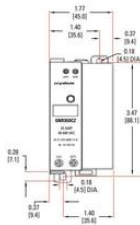
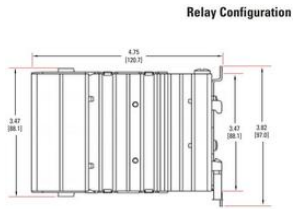
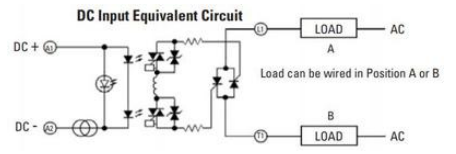
*GNR35A Series rated to 60°C max ambient



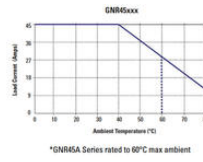
*GNR5A Series rated to 60°C max ambient



*GNR65A Series rated to 60°C max ambient



*GNR5A Series rated to 60°C max ambient



*GNR65A Series rated to 60°C max ambient