

## GNR SERIES 45MM RELAY

GNR35DHZ  
 DIN Rail SSR 45mm 600V ac 35A, 4-32V dc In, ZC



- Load current 35A and 45A
- Operating Voltage 48-600 VAC
- Control Voltage 4-32 VDC, 90-140 VAC and 180-260 VAC
- Broad range of power ratings



### PRODUCT DESCRIPTION

These relays offer a broad range of power ratings which makes them suitable for diverse applications. Their high reliability and efficient design have made of them a market favorite for many years.

- Current ratings of 35 and 45 amps
- Output voltage rating: 48-600 VAC
- Direct Bond Copper (DBC) Substrate
- LED input status indicator
- UL 508 Endurance Rating for Enhanced Reliability
- UL/CSA/TUV Approved, CE Compliant
- Built-in overvoltage protection
- DIN Rail or Panel Mount
- Zero voltage or Instantaneous turn-on output

### TECHNICAL DATA

#### OVERVIEW

Type of control	Zero voltage turn on
Connection	Screw connection
Additional features	Relay configuration
Output current	35 A
Activation	0 V
Control voltage	4-32V dc
Output voltage	48-600V ac

#### OUTPUT SPECIFICATION

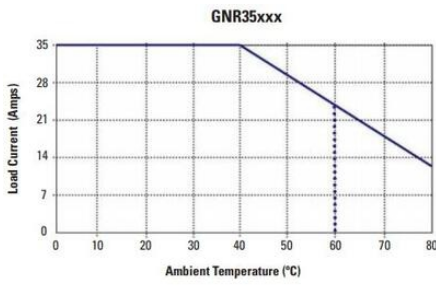
Leakage current at V max, T=25°C max	1 mA
Peak current	130 A
Number of poles	1
I <sup>2</sup> t value	2230 A <sup>2</sup> s
Voltage drop over semiconductor at max	1,35 V
Peak voltage	1100 V
Output voltage	48-600V ac

## INPUT SPECIFICATION

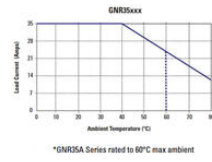
Turn-off voltage	1 V
Input current max	19 mA
Release time	10 ms
Response time	10 ms
Input current min	16 mA
Control voltage	4-32V dc

## GENERAL SPECIFICATION

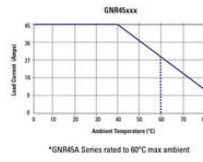
IP class	IP20
Depth	120,7 mm
Storage temperature min	-40 °C
Insulation voltage in/out	4000 V
Temperature operational max	80 °C
Weight	400 g
Width	45 mm
Storage temperature max	100 °C
Temperature operational min	-20 °C
LED indication	Input status indication
Approvals	CE, CSA, EMC, UL
Height	88,1 mm
Load voltage	AC



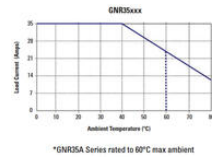
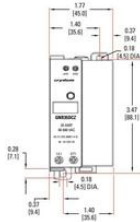
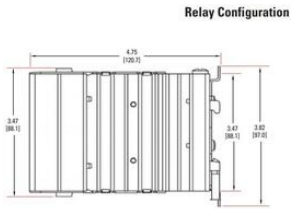
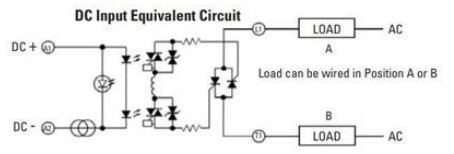
\*GNR35A Series rated to 60°C max ambient



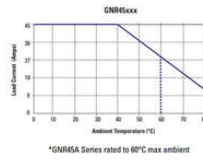
\*GNR5A Series rated to 60°C max ambient



\*GNR65A Series rated to 60°C max ambient



\*GNR5A Series rated to 60°C max ambient



\*GNR65A Series rated to 60°C max ambient