

CROUZET - GN SERIES SOLID STATE RELAY

Panel Mount - AC Output Single Phase

84137000N
 SSR 10A 24-280 VAC Out 4-32 VDC In ZC

- Zero cross or instantaneous switching
- Output current: 10 - 125 Amps
- Built-in over voltage protection (zero cross only)
- LED input status indicator



PRODUCT DESCRIPTION

TECHNICAL DATA

OVERVIEW

Mounting	Panel mount
Type of control	Zero voltage turn on
Output current	10 A
Control voltage	4-32V dc
Output voltage	24-280V ac

OUTPUT SPECIFICATION

Transient Voltage	600 V pk
Maximum off-state leakage current	1 mA rms
Minimum Load Current	5 mA rms
Maximum 1 cycle surge current	120/126 (min) 160 (typ)
Thermal resistance junction to case	2,3 °C/W
1 Second surge current	45 A
Number of poles	1
Maximum Load Current	10 A rms
Output voltage	24-280V ac

Maximum 1/2 Cycle I ² t for fusing (A ² sec)	78/128
Minimum heat sink for rated current @ 40 °C	5,3 °C/W
Maximum on-state voltage drop	1.2V

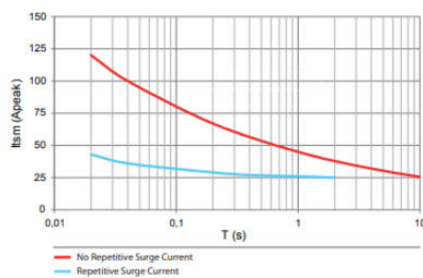
INPUT SPECIFICATION

Input Current Max	14 mA
Minimum turn-on voltage	3V dc
Maximum turn-off time (ms)	1/2 cycle
Input current min	10 mA
Maximum turn-on time (ms)	1/2 cycle
Must turn-off voltage	1V dc
Maximum reverse voltage	-32V dc
Control voltage	4-32V dc

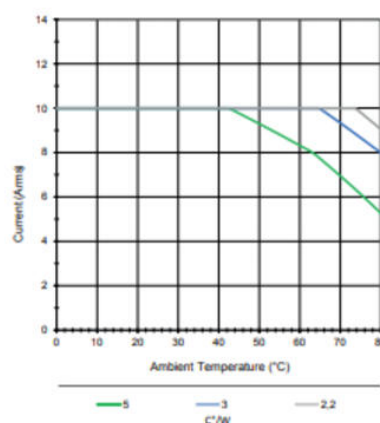
GENERAL SPECIFICATION

Depth	29,1 mm
Weight	80 g
Ambient operating temperature	-40 ... +80°C
Dielectric strength input to output (50/60Hz)	4000 V rms
Width	44,5 mm
LED input status indicator	Green
Housing material	UL94 V-0
Ambient storage temperature	-40 ... +100°C
Material base	Aluminium
Approvals	CE, cRUus, VDE
Height	59,4 mm

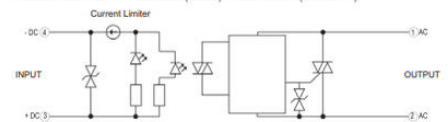
GN - 10 A



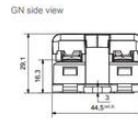
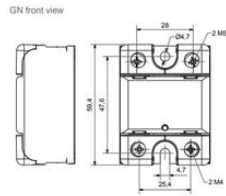
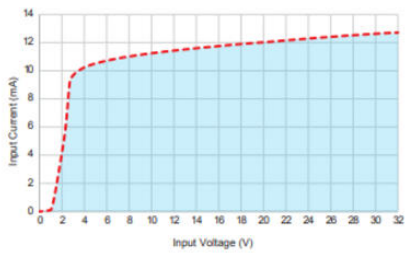
GN - 10 A



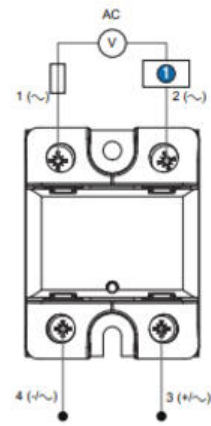
GN Series 4-32 V--- control (Triac) - 10 A/25 A (280 V~)



Input current vs Input Voltage
Standard Regulated DC inputs



GN



For the random (instantaneous) models, external overvoltage protection is recommended: TVS Diode

i Load