

## CROUZET - GN+ SERIES SOLID STATE RELAY

Panel Mount - AC Output Single Phase

84138010N  
 SSR 25A 12-270 VAC Out 4-32 VDC In SZC

- Zero cross switching
- Output current 25 - 125 Amps
- Built-in overvoltage protection
- LED input status indicator



### PRODUCT DESCRIPTION

### TECHNICAL DATA

#### OVERVIEW

Mounting	Panel mount
Type of control	Special zero voltage turn on
Output current	25 A
Control voltage	4-32V dc
Output voltage	12-270V ac

#### OUTPUT SPECIFICATION

Transient Voltage	600 V pk
Maximum off-state leakage current	1 mA rms
Minimum Load Current	5 mA rms
Maximum 1 cycle surge current	250/260 (min) 340 (typ)
Thermal resistance junction to case	1,7 °C/W
1 Second surge current	95 A
Number of poles	1
Maximum Load Current	25 A rms
Output voltage	12-270V ac

Maximum 1/2 Cycle I <sup>2</sup> t for fusing (A <sup>2</sup> sec)	340/600
Minimum heat sink for rated current @ 40 °C	1,3 °C/W
Maximum on-state voltage drop	1.25V

## INPUT SPECIFICATION

Input Current Max	14 mA
Minimum turn-on voltage	3V dc
Maximum turn-off time (ms)	1/2 cycle
Input current min	10 mA
Maximum turn-on time (ms)	1/2 cycle
Must turn-off voltage	2V dc
Maximum reverse voltage	-32V dc
Control voltage	4-32V dc

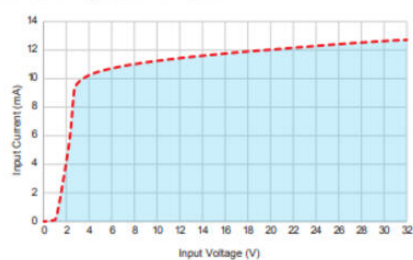
## GENERAL SPECIFICATION

Depth	29,1 mm
Weight	80 g
Ambient operating temperature	-40 ... +80°C
Dielectric strength input to output (50/60Hz)	4000 V rms
Width	44,5 mm
LED input status indicator	Green
Housing material	UL94 V-0
Ambient storage temperature	-40 ... +100°C
Material base	Aluminium
Approvals	CE, cRUus, VDE
Height	59,4 mm

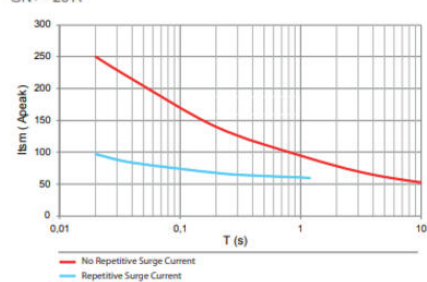
GN+ Series DC Triac - 25 A



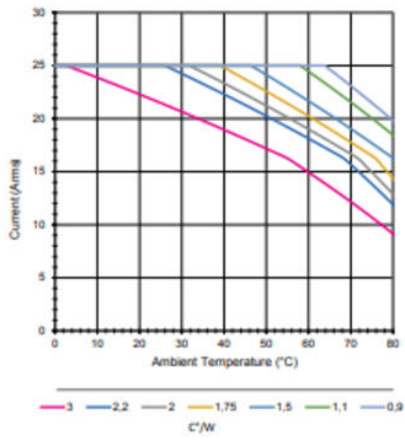
Input current vs Input Voltage  
Standard Regulated DC inputs



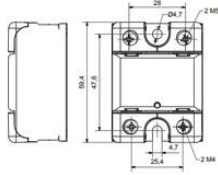
GN+ - 25 A



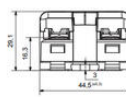
# GN+ - 25 A



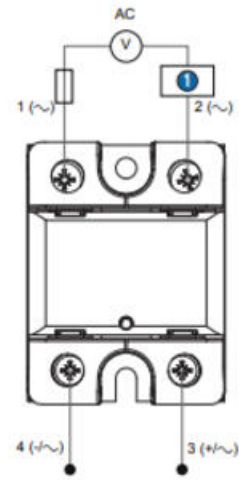
GN+ front view



GN+ side view



# GN+



Protection in the mains (fuses/circuit breaker)

① Load