

CROUZET - GND SERIES SOLID STATE RELAY

Panel Mount - DC Output

84137850N
 SSR 10A 5-200 VDC Out 4-32 VDC In

- DC Switching
- Output current 10 - 40 Amps
- Built-in overvoltage protection
- LED input status indicator



PRODUCT DESCRIPTION

TECHNICAL DATA

OVERVIEW

| | |
|-----------------|--------------|
| Mounting | Panel mount |
| Type of control | DC Switching |
| Output current | 10 A |
| Control voltage | 4-32V dc |
| Output voltage | 5-200V dc |

OUTPUT SPECIFICATION

| | |
|---|-----------|
| Transient Voltage | 200 V pk |
| Maximum off-state leakage current | 3 mA rms |
| Minimum Load Current | 5 mA rms |
| Thermal resistance junction to case | 0,66 °C/W |
| Number of poles | 1 |
| Maximum Load Current | 20 A rms |
| Output voltage | 5-200V dc |
| Minimum heat sink for rated current @ 40 °C | 3,4 °C/W |
| Maximum on-state voltage drop | 0.97V pk |

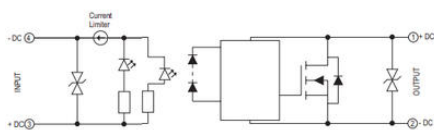
INPUT SPECIFICATION

| | |
|----------------------------|----------|
| Input Current Max | 35 mA |
| Minimum turn-on voltage | 3.5V dc |
| Maximum turn-off time (ms) | 0.02 |
| Input current min | 34 mA |
| Maximum turn-on time (ms) | 0.02 |
| Must turn-off voltage | 1V dc |
| Maximum reverse voltage | -32V dc |
| Control voltage | 4-32V dc |

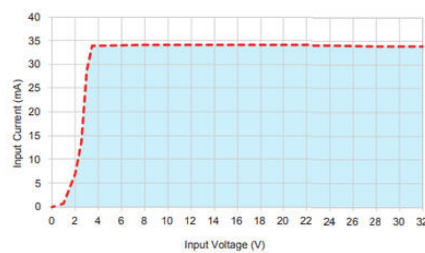
GENERAL SPECIFICATION

| | |
|-------------------------------|----------------|
| Depth | 29,1 mm |
| Weight | 80 g |
| Ambient operating temperature | -25 ... +90°C |
| Width | 44,5 mm |
| LED input status indicator | Green |
| Housing material | UL94 V-0 |
| Ambient storage temperature | -40 ... +100°C |
| Material base | Aluminium |
| Approvals | CE, cRUus |
| Height | 59,4 mm |

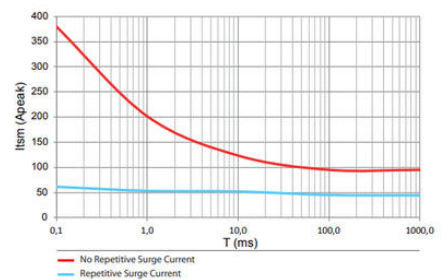
GND Series DC control without output protection



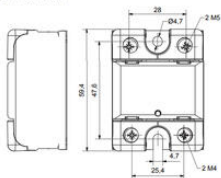
Input current vs Input Voltage
Standard Regulated DC inputs



GND - 10 A

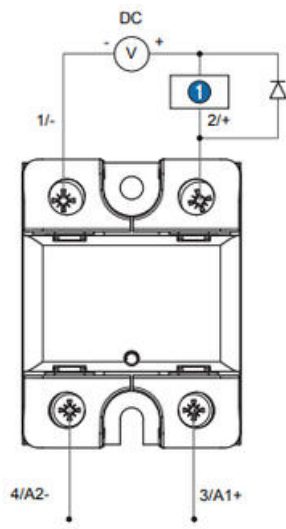


GND front view



GND side view





GND

1 Load