

## KES IP66 CABLE ENTRY WITH STRAIN RELIEF

KES, KES-R

28630.4

KES 13/24, Screw Mount Cable Entry, 13 max, Black

- For cable, pipe & hose diameters 3.2mm to 20.5mm
- Double Sealing to IP66
- Polyamide 6.6 Glass fibre reinforced core
- Hygienic design for wash down - Ecolab approved
- Integrated strain relief to EN62444



### PRODUCT DESCRIPTION

The KES cable entry system allows unassembled cables, or pneumatic hoses to be quickly inserted into switchgear cabinets or machine housings without the use of tools.

The KES entry plates feature a dimensionally stable & ridged, elastomer-encapsulated glass fibre reinforced polyamide frame.

There are 3 different mounting options; external screw-on outer mount, internal screw mount using threaded bushes from the inside, or snap on without screws.

To insert the required number of cables, the surface membrane is first pierced with a small screwdriver. Then the unassembled cables, hoses or pipes can be easily pushed through the plate. The special construction of the double sealed conical grommets on the back of the plate provides IP66 sealing and reliable strain relief in accordance to DIN EN 62444.

With up to 32 cables per plate (with various diameters from 3.2 to 20.5 mm), the KES is ideal for confined spaces and achieves a significantly higher packaging density than conventional entry systems such as skin top glands.

The KES is designed to use the same mounting cut-outs as the standard 24-pin industrial connectors, such as Harting & Walther, so can be easily retro-fitted.

All variants are UL approved and available in grey or black, the polyamide core and the TPE membrane conform to UL 94 V-0 classification.

# TECHNICAL DATA

## GENERAL DATA

Installed height	14,5 mm
IP class	IP66
Colour	Black
Number of cables	13
Length	149,6 mm
Mounting	Screw on
Number of cables x cable diameter	10 x 3.2mm-6.3mm, 3 x 16.0mm-20.5mm
Width	58 mm
Type	KES
NEMA class	4x

## MOUNTING DETAILS

Fixing screws	M5
Width of cutout	36 mm
Torque of the fixing screws	3 Nm
Wall thickness	N/A
Diameter of the screw holes	5,5 mm
Length of cutout	112 mm
Number of screw holes	4

## MATERIALS

Flammability class	V-0
Sealing material	TPE
Glass-fibre reinforced	Yes
Operating temperature from	-40 °C
Halogen-free	Yes
Material	Polyamide 6.6
Operating temperature to	90 °C
Silicone-free	Yes

## ADDITIONAL DATA

Pack size	10
Country of origin	DE
Tariff code	39259020



You can choose one of three attachment options to fit your requirements

1. Screw-on mount



The KES (without threaded bush) is screwed from the outside onto the housing wall.

2. Screw-on mount with threaded bushes and latching clips



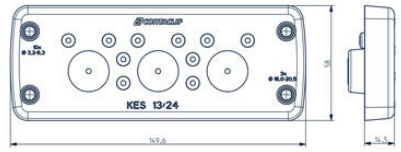
Using the latching clips, the KES-GB latches onto the outside of the housing wall. It is then screwed on from the inside, through the housing wall, using the integrated threaded bushes.

3. Latched (snap-on) mount using latching hooks

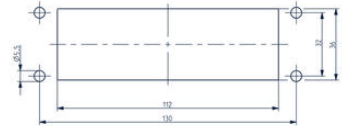


The KES-R is latched from outside to the housing wall using the latching clips.

KES 13/24  
 10x Ø12 - 6,3mm  
 3x Ø16 - 20,5mm



Panel cut-out  
 for wall thickness  
 1,5 - 2 mm  
 (for snap-on attachment)



You can choose one of three attachment options to fit your requirements

1. Screw-on mount



The KES (without threaded bush) is screwed from the outside onto the housing wall.

2. Screw-on mount with threaded bushes and latching clips



Using the latching clips, the KES-GB latches onto the outside of the housing wall. It is then screwed on from the inside, through the housing wall, using the integrated threaded bushes.

3. Latched (snap-on) mount using latching hooks



The KES-R is latched from outside to the housing wall using the latching clips.